

**REDONDO BEACH BEAUTY COLLEGE**  
**2205 W. ARTESIA BOULEVARD**  
**REDONDO BEACH, CA 90278**  
**Phone: (310) 370-7464 Fax: (310) 370-8227**  
[www.rbbeautycollege.com](http://www.rbbeautycollege.com)



**SCHOOL PERFORMANCE FACT SHEET**  
**Calendar Years 2017 & 2018**

**PROGRAM NAME: ADVANCED MANICURING      PROGRAM LENGTH: 600 hours 10-20 Weeks**

**On-Time Completion Rates: (Graduation Rates)**

Calendar Year	Number of Students Who Began Program	Students Available for Graduation	Number of on-time Graduates	On-time Completion Rate
**2017	20	20	14	70%
**2018	19	18	18	100%

**Student's Initials: \_\_\_\_\_      Date: \_\_\_\_\_**  
**Initial only after you have had sufficient time to read and understand the information.**

**150% TABLE OPTIONAL (Program less than one year)**

**Students Completing After Published Program Length - 150% completion Rate (101-150%)**

Calendar Year	Number of Students Who Began Program	Students Available for Graduation	150% Graduates	150% Completion Rate
**2017	N/A	N/A	N/A	N/A
**2018	N/A	N/A	N/A	N/A

\*\* Included if the program is more than one year in length.

**Student's Initials: \_\_\_\_\_      Date: \_\_\_\_\_**  
**Initial only after you have had sufficient time to read and understand the information.**

**REDONDO BEACH BEAUTY COLLEGE**  
**2205 W. ARTESIA BOULEVARD**  
**REDONDO BEACH, CA 90278**  
**Phone: (310) 370-7464 Fax: (310) 370-8227**  
[www.rbbeautycollege.com](http://www.rbbeautycollege.com)



**Job Placement Rates (includes data for the two calendar years prior to reporting)**

Calendar Year	Number of Student Who Began Program	Number of Graduate	Graduates Available for Employment	Graduates Employed in the Field	Placement Rate Employed in the Field
**2017	20	14	14	13	92.86
**2018	19	18	18	16	88.88%

You may obtain from the institution a list of the employment positions determined to be in the field for which a student received education and training. **Please see below**

**39-5092 Manicurists and Pedicurists:** *Clean and shape customers' fingernails and toenails. May polish or decorate nails.*

Annual Wages for 2019	Median Hourly	Median Annually
<b>Los Angeles</b>	<b>\$12.27</b>	<b>\$25,517.00</b>

The US Department of Labor, Bureau of Statistics has provided us with the salary/wage information of persons employed in our programs.

You may obtain a list of the employment positions determined to be within the field that the education received in this program will prepare you for, a list of the source of information used to substantiate the above salary disclosure, and a description of the manner in which the figures provided above have been calculated from the Admissions & Placement Office or visit [www.labormarketinfo.edd.ca.gov](http://www.labormarketinfo.edd.ca.gov)

**Gainful Employment Categories (includes data for the two calendar years prior to reporting)**

**Part Time vs. Full Time Employment**

Calendar Year	“Part-Time” Graduates Employed in the field 20 to 29 hours per week	“Full-Time” Graduates Employed in at least 30 hours per week	Total Graduates Employed in the Field
**2017	9	4	13
**2018	10	6	16

**Student's Initials:** \_\_\_\_\_ **Date:** \_\_\_\_\_

**Initial only after you have had sufficient time to read and understand the information.**

**REDONDO BEACH BEAUTY COLLEGE**  
**2205 W. ARTESIA BOULEVARD**  
**REDONDO BEACH, CA 90278**  
**Phone: (310) 370-7464 Fax: (310) 370-8227**  
[www.rbbeautycollege.com](http://www.rbbeautycollege.com)



**Single Position vs. Concurrent Aggregated Positions**

Calendar Year	Graduates Employed in the field in the single position	Graduates Employed in the field in concurrent aggregated positions	Total Graduates Employed in the Field
**2017	13	N/A	13
**2018	16	N/A	16

**Self-Employed/Freelance Positions**

Calendar Year	Graduates Employed who are self-employed or working freelance	Total Graduates Employed in the Field
**2017	N/A	N/A
**2018	N/A	N/A

**Institutional Employment**

Calendar Year	Graduates Employed in the field who are employed by the institution, an employer owned by the institution, or an employer who shares ownership with the institution	Total Graduates Employed in the Field
**2017	N/A	N/A
**2018	N/A	N/A

**Student's Initials: \_\_\_\_\_ Date: \_\_\_\_\_**

**Initial only after you have had sufficient time to read and understand the information.**

**IF the majority of graduates from this program obtain jobs in self-employment or freelance work add:**

This program may result in freelance or self-employment.

- The work available to graduates of this program is usually for freelance or self-employment.
- This type of work may not be consistent.
- The period of employment can range from one day to weeks to several months.
- Hours worked in a day or week may be more or less than the traditional 8 hour work day or 40 hour work week.
- You can expect to spend unpaid time expanding your networks, advertising, promoting your services, or honing your skills.
- Once graduates begin to work freelance or are self-employed, they will be asked to provide documentation that they are employed as such so that they may be counted as placed for our job placement records.
- Students initialing this disclosure understand that either a majority or all of this school's graduates are employed in this manner and understand what comprises this work style.

**Student's Initials: \_\_\_\_\_ Date: \_\_\_\_\_**

**Only initial after you have had sufficient time to read and understand the information.**

**REDONDO BEACH BEAUTY COLLEGE**  
**2205 W. ARTESIA BOULEVARD**  
**REDONDO BEACH, CA 90278**  
**Phone: (310) 370-7464 Fax: (310) 370-8227**  
[www.rbbeautycollege.com](http://www.rbbeautycollege.com)



**License Examination Passage Rates (includes data for the two calendar years prior to reporting)**

Calendar Year	Number of Graduates in Calendar Year	Number of Graduates Taking Exam	Number Who Passed First Available Exam	Number Who Failed First Available Exam	Passage Rate
**2017	14	14	14	N/A	100%
**2018	18	18	15	3	83.33%

Licensure examination passage data is available from the state agency administering the examination and also in student's file.

**Student's Initials: \_\_\_\_\_ Date: \_\_\_\_\_**

**Initial only after you have had sufficient time to read and understand the information**

**Salary and Wage Information(includes data for the two calendar years prior to reporting)**

**Annual Salary and Wages Reported for Graduates Employed in the Field**

Calendar Year	Graduates Available for Employment	Graduates Employed in Field	\$10,000-\$15,000	\$15,001-\$20,000	\$20,001-\$25,000	\$25,001-\$30,001	No Salary Information Reported
**2017	14	13	13	N/A	N/A	N/A	N/A
**2018	19	16	16	N/A	N/A	N/A	N/A

A list of sources used to substantiate salary disclosures is available from the school. (Insert how student can obtain this information.)

**Student's Initials: \_\_\_\_\_ Date: \_\_\_\_\_**

**Initial only after you have had sufficient time to read and understand the information.**

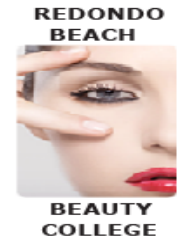
**Cost of Educational Program**

Total charges for the program for students completing on-time in 2018: **\$4,200.00** Additional charges may be incurred if the program is not completed on-time.

**Student's Initials: \_\_\_\_\_ Date: \_\_\_\_\_**

**Initial only after you have had sufficient time to read and understand the information.**

**REDONDO BEACH BEAUTY COLLEGE**  
**2205 W. ARTESIA BOULEVARD**  
**REDONDO BEACH, CA 90278**  
**Phone: (310) 370-7464 Fax: (310) 370-8227**  
[www.rbbeautycollege.com](http://www.rbbeautycollege.com)



**Federal Student Loan Debt**

<b>Most recent three year cohort default rate, as reported by the United State Department of Education.1</b> School Default Rate <b>FY 2016, 2015, and 2014</b> <small>Print from nslds.ed.gov</small> <b>10/16/2019</b>	<b>The percentage of enrolled students in 2018 receiving federal student loans to pay for this program.</b>	<b>The average amount of federal student loan debt of 2018 graduates who took out federal student loans at this institution.</b>	<b>The percentage of graduates in 2018 with Federal student loans as calculated by the institution.</b>
N/A	N/A	N/A	N/A

The percentage of students who defaulted on their federal student loans is called the Cohort Default Rate (CDR). It shows the percentage of this school's students who were more than 270 days (9 months) behind on their federal student loans within three years of when the first payment was due. This is the most recent CDR reported by the U.S. Department of Education.

**Student's Initials:** \_\_\_\_\_ **Date:** \_\_\_\_\_

**Initial only after you have had sufficient time to read and understand the information.**

This fact sheet is filed with the Bureau for Private Postsecondary Education. Regardless of any information you may have relating to completion rates, placement rates, starting salaries, or license exam passage rates, this fact sheet contains the information as calculated pursuant to state law.

Any questions a student may have regarding this fact sheet that have not been satisfactorily answered by the institution may be directed to the Bureau for Private Postsecondary Education at 2535 Capitol Oaks Drive, Suite 400, Sacramento, CA 95833, [www.bppe.ca.gov](http://www.bppe.ca.gov), toll-free telephone number (888) 370-7589 or by fax (916) 263-1897.

\_\_\_\_\_  
 Student Name-Print

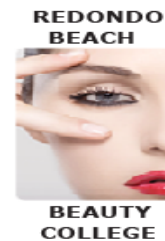
\_\_\_\_\_  
 Student Signature

\_\_\_\_\_  
 Date

\_\_\_\_\_  
 School Official

\_\_\_\_\_  
 Date

**REDONDO BEACH BEAUTY COLLEGE**  
2205 W. ARTESIA BOULEVARD  
REDONDO BEACH, CA 90278  
Phone: (310) 370-7464 Fax: (310) 370-8227  
[www.rbbeautycollege.com](http://www.rbbeautycollege.com)



### Definitions

- “Number of Students Who Began the Program” means the number of students who began a program who were scheduled to complete the program within 100% of the published program length within the reporting calendar year and excludes all students who cancelled during the cancellation period.
- “Students Available for Graduation” is the number of students who began the program minus the number of students who have died, been incarcerated, or been called to active military duty.
- “Number of On-time Graduates” is the number of students who completed the program within 100% of the published program length within the reporting calendar year.
- “On-time Completion Rate” is the number of on-time graduates divided by the number of students available for graduation.
- “150% Graduates” is the number of students who completed the program within 150% of the program length (includes on-time graduates).
- “150% Completion Rate” is the number of students who completed the program in the reported calendar year within 150% of the published program length, including on-time graduates, divided by the number of students available for graduation.
- “Graduates Available for Employment” means the number of graduates minus the number of graduates unavailable for employment.
- “Graduates Unavailable for Employment” means the graduate who, after graduation, dies, become incarcerated, are called to active military duty, are international students that leave the United States or do not have a visa allowing employment in the United States, or are continuing their education in an accredited or bureau-approved postsecondary institution.
- “Graduates employed in the Field” means a graduate who beginning within six months after a student completes the applicable educational program are gainfully employed, whose employment has been reported, and for whom the institution has documented verification of employment. For occupations for which the state requires passing an examination, the six months period begins after the announcement of the examination results for the first examination available after a student completes an applicable educational program.
- “Placement Rate Employed in the Field” is calculated by dividing the number of graduates gainfully employed in the field by the number of graduates available for employment.
- “Number of Graduates Taking Exam” is the number of graduates who took the first available exam in the reported calendar year.
- “First Available Exam Date” is the date for the first available exam after a student completed a program.
- “Passage Rate” is calculated by dividing the number of graduates who passed the exam by the number of graduates who took the reported licensing exam.
- “Number Who Passed First Available Exam” is the number of graduates who took and passed the first available licensing exam after completing the program.
- “Salary” is as reported by graduate or graduate’s employer.
- “No Salary Information Reported” is the number of graduates for whom, after making reasonable attempts, the school was not able to obtain salary information.

**REDONDO BEACH BEAUTY COLLEGE**  
2205 W. ARTESIA BOULEVARD  
REDONDO BEACH, CA 90278  
Phone: (310) 370-7464 Fax: (310) 370-8227  
[www.rbbeautycollege.com](http://www.rbbeautycollege.com)



## **STUDENT'S RIGHT TO CANCEL**

**The student has the right to cancel** the enrollment agreement and obtain a full refund of charges paid, less a reasonable deposit or registration fee not to exceed one hundred fifty dollars (\$150), if notice of cancellation is made through attendance at the first class session (**first day of class to “first class day”, or the seven days after enrollment was signed**), whichever is later.

To obtain a refund, the student must provide a written notice to:

**Redondo Beach Beauty College**  
2205 W. Artesia Blvd  
Redondo Beach, CA 90278  
Phone (310)370-7464  
Fax (310)370-8227  
Email: [rbbeautycollege@yahoo.com](mailto:rbbeautycollege@yahoo.com)

If the institution gave the student any equipment, the student shall return the equipments within 30 days following the date of the Notice of Cancellation. If the student fails to return the equipment within this 30 day-period, the institution may retain that portion of the consideration paid by the student equal to the documented cost to the institution of the equipment and shall refund the portion of the consideration exceeding the documented cost to the institution of the equipment within 10 days after the period within which the student is required to return the equipment. The student may retain the equipment without further obligation to pay for it.

**Student's Initials:** \_\_\_\_\_ **Date:** \_\_\_\_\_

**Initial only after you have had sufficient time to read and understand the information**





**REDONDO BEACH BEAUTY COLLEGE**  
**2205 W. ARTESIA BOULEVARD**  
**REDONDO BEACH, CA 90278**  
**Phone: (310) 370-7464 Fax: (310) 370-8227**  
[www.rbbeautycollege.com](http://www.rbbeautycollege.com)



**SCHOOL PERFORMANCE FACT SHEET**  
**Calendar Years 2017 & 2018**

**PROGRAM NAME: BARBERING      PROGRAM LENGTH      1500 hours 47-75 Weeks**

**On-Time Completion Rates: (Graduation Rates)**

Includes data for the two calendar years prior to reporting

Calendar Year	Number of Students Who Began Program	Students Available for Graduation	Number of on-time Graduates	On-time Completion Rate
**2017	N/A	N/A	N/A	N/A
**2018	N/A	N/A	N/A	N/A

Student's Initials: \_\_\_\_\_ Date: \_\_\_\_\_

Initial only after you have had sufficient time to read and understand the information.

**150% TABLE OPTIONAL (Program less than one year)**

**Students Completing After within 150% of Published Program Length**

Calendar Year	Number of Students Who Began Program	Students Available for Graduation	150% Graduates	150% Completion Rate
**2017	N/A	N/A	N/A	N/A
**2018	N/A	N/A	N/A	N/A

\*\* Included if the program is more than one year in length.

Student's Initials: \_\_\_\_\_ Date: \_\_\_\_\_

Initial only after you have had sufficient time to read and understand the information.

**REDONDO BEACH BEAUTY COLLEGE**  
**2205 W. ARTESIA BOULEVARD**  
**REDONDO BEACH, CA 90278**  
**Phone: (310) 370-7464 Fax: (310) 370-8227**  
[www.rbbeautycollege.com](http://www.rbbeautycollege.com)



**Job Placement Rates (includes data for the two calendar years prior to reporting)**

Calendar Year	Number of Student Who Began Program	Number of Graduate	Graduates Available for Employment	Graduates Employed in the Field	Placement Rate Employed in the Field
**2017	N/A	N/A	N/A	N/A	N/A
**2018	N/A	N/A	N/A	N/A	N/A

You may obtain from the institution a list of the employment positions determined to be in the field for which a student received education and training. **Please see below:**

**39.5011 Barber** Provide barbering services, such as cutting, trimming, shampooing, and styling hair, trimming beards, or giving shaves.

Annual Wages for 2019	Median Hourly	Median Annually
Los Angeles	\$14.46	\$30,084.00

The US Department of Labor, Bureau of Statistics has provided us with the salary/wage information of persons employed in our programs.

You may obtain a list of the employment positions determined to be within the field that the education received in this program will prepare you for, a list of the source of information used to substantiate the above salary disclosure, and a description of the manner in which the figures provided above have been calculated from the Admissions & Placement Office or visit [www.labormarketinfo.edd.ca.gov](http://www.labormarketinfo.edd.ca.gov)

**Gainful Employment Categories (includes data for the two calendar years prior to reporting)**  
**Part Time vs. Full Time Employment**

Calendar Year	“Part-Time” Graduates Employed in the field 20 to 29 hours per week	“Full-Time” Graduates Employed in at least 30 hours per week	Total Graduates Employed in the Field
**2017	N/A	N/A	N/A
**2018	N/A	N/A	N/A

**Student's Initials:** \_\_\_\_\_ **Date:** \_\_\_\_\_  
**Initial only after you have had sufficient time to read and understand the information.**

**REDONDO BEACH BEAUTY COLLEGE**  
 2205 W. ARTESIA BOULEVARD  
 REDONDO BEACH, CA 90278  
 Phone: (310) 370-7464 Fax: (310) 370-8227  
[www.rbbeautycollege.com](http://www.rbbeautycollege.com)



**Single Position vs. Concurrent Aggregated Positions**

Calendar Year	Graduates Employed in the field in the single position	Graduates Employed in the field in concurrent aggregated positions	Total Graduates Employed in the Field
**2017	N/A	N/A	N/A
**2018	N/A	N/A	N/A

**Self-Employed/Freelance Positions**

Calendar Year	Graduates Employed who are self-employed or working freelance	Total Graduates Employed in the Field
**2017	N/A	N/A
**2018	N/A	N/A

**Institutional Employment**

Calendar Year	Graduates Employed in the field who are employed by the institution, an employer owned by the institution, or an employer who shares ownership with the institution	Total Graduates Employed in the Field
**2017	N/A	N/A
**2018	N/A	N/A

**Student's Initials:** \_\_\_\_\_ **Date:** \_\_\_\_\_

**Initial only after you have had sufficient time to read and understand the information.**

**IF the majority of graduates from this program obtain jobs in self-employment or freelance work add:**

This program may result in freelance or self-employment.

- The work available to graduates of this program is usually for freelance or self-employment.
- This type of work may not be consistent.
- The period of employment can range from one day to weeks to several months.
- Hours worked in a day or week may be more or less than the traditional 8 hour work day or 40 hour work week.
- You can expect to spend unpaid time expanding your networks, advertising, promoting your services, or honing your skills.
- Once graduates begin to work freelance or are self-employed, they will be asked to provide documentation that they are employed as such so that they may be counted as placed for our job placement records.
- Students initialing this disclosure understand that either a majority or all of this school's graduates are employed in this manner and understand what comprises this work style.

**Student's Initials:** \_\_\_\_\_ **Date:** \_\_\_\_\_

**Only initial after you have had sufficient time to read and understand the information.**

**REDONDO BEACH BEAUTY COLLEGE**  
**2205 W. ARTESIA BOULEVARD**  
**REDONDO BEACH, CA 90278**  
**Phone: (310) 370-7464 Fax: (310) 370-8227**  
[www.rbbeautycollege.com](http://www.rbbeautycollege.com)



**License Examination Passage Rates (includes data for the two calendar years prior to reporting)**

Calendar Year	Number of Graduates in Calendar Year	Number of Graduates Taking Exam	Number Who Passed First Available Exam	Number Who Failed First Available Exam	Passage Rate
**2017	N/A	N/A	N/A	N/A	N/A
**2018	N/A	N/A	N/A	N/A	N/A

Licensure examination passage data is available from the state agency administering the examination and also in student's file.

**Student's Initials: \_\_\_\_\_ Date: \_\_\_\_\_**

**Initial only after you have had sufficient time to read and understand the information.**

**Salary and Wage Information(includes data for the two calendar years prior to reporting)**

**Annual Salary and Wages Reported for Graduates Employed in the Field**

Calendar Year	Graduates Available for Employment	Graduates Employed in Field	\$15,000-\$20,000	\$20,001-\$25,000	\$25,001-\$30,000	\$30,001-\$35,001	No Salary Information Reported
**2017	N/A	N/A	N/A	N/A	N/A	N/A	N/A
**2018	N/A	N/A	N/A	N/A	N/A	N/A	N/A

A list of sources used to substantiate salary disclosures is available from the school. (Insert how student can obtain this information.)

**Student's Initials: \_\_\_\_\_ Date: \_\_\_\_\_**

**Initial only after you have had sufficient time to read and understand the information.**

**Cost of Educational Program**

Total charges for the program for students completing on-time in 2017: **\$11,850.00** Additional charges may be incurred if the program is not completed on-time.

**Student's Initials: \_\_\_\_\_ Date: \_\_\_\_\_**

**Initial only after you have had sufficient time to read and understand the information.**

**REDONDO BEACH BEAUTY COLLEGE**  
**2205 W. ARTESIA BOULEVARD**  
**REDONDO BEACH, CA 90278**  
**Phone: (310) 370-7464 Fax: (310) 370-8227**  
[www.rbbeautycollege.com](http://www.rbbeautycollege.com)



**Federal Student Loan Debt**

<b>(A) Most recent three year cohort default rate, as reported by the United State Department of Education.</b> <small>School Default Rate  FY 2016, 2015, and 2014  Print from nsls.ed.gov 10/16/2019</small>	<b>(B)The percentage of enrolled students in 2018 receiving federal student loans to pay for this program.</b>	<b>© The average amount of Federal student loan debt of those graduates who have Federal student loan debt in the reporting year 2018</b>	<b>(D)The percentage of graduates in 2018 with Federal student loans as calculated by the institution.</b>
N/A	N/A	N/A	N/A

The percentage of students who defaulted on their federal student loans is called the Cohort Default Rate (CDR). It shows the percentage of this school’s students who were more than 270 days (9 months) behind on their federal student loans within three years of when the first payment was due. This is the most recent CDR reported by the U.S. Department of Education.

**Student’s Initials:** \_\_\_\_\_ **Date:** \_\_\_\_\_

**Initial only after you have had sufficient time to read and understand the information.**

This fact sheet is filed with the Bureau for Private Postsecondary Education. Regardless of any information you may have relating to completion rates, placement rates, starting salaries, or license exam passage rates, this fact sheet contains the information as calculated pursuant to state law.

Any questions a student may have regarding this fact sheet that have not been satisfactorily answered by the institution may be directed to the Bureau for Private Postsecondary Education at 2535 Capitol Oaks Drive, Suite 400, Sacramento, CA 95833, [www.bppe.ca.gov](http://www.bppe.ca.gov), toll-free telephone number (888) 370-7589 or by fax (916) 263-1897.

\_\_\_\_\_  
Student Name-Print

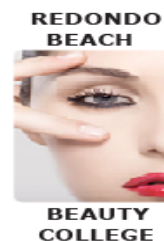
\_\_\_\_\_  
Student Signature

\_\_\_\_\_  
School Official

\_\_\_\_\_  
Date

\_\_\_\_\_  
Date

**REDONDO BEACH BEAUTY COLLEGE**  
2205 W. ARTESIA BOULEVARD  
REDONDO BEACH, CA 90278  
Phone: (310) 370-7464 Fax: (310) 370-8227  
[www.rbbeautycollege.com](http://www.rbbeautycollege.com)



### Definitions

- Number of Students Who Began the Program” means the number of students who began a program who were scheduled to complete the program within 100% of the published program length within the reporting calendar year and excludes all students who cancelled during the cancellation period.
- “Students Available for Graduation” is the number of students who began the program minus the number of students who have died, been incarcerated, or been called to active military duty.
- “Number of On-time Graduates” is the number of students who completed the program within 100% of the published program length within the reporting calendar year.
- “On-time Completion Rate” is the number of on-time graduates divided by the number of students available for graduation.
- “150% Graduates” is the number of students who completed the program within 150% of the program length (includes on-time graduates).
- “150% Completion Rate” is the number of students who completed the program in the reported calendar year within 150% of the published program length, including on-time graduates, divided by the number of students available for graduation.
- “Graduates Available for Employment” means the number of graduates minus the number of graduates unavailable for employment.
- “Graduates Unavailable for Employment” means the graduate who, after graduation, dies, become incarcerated, are called to active military duty, are international students that leave the United States or do not have a visa allowing employment in the United States, or are continuing their education in an accredited or bureau-approved postsecondary institution.
- “Graduates employed in the Field” means a graduate who beginning within six months after a student completes the applicable educational program are gainfully employed, whose employment has been reported, and for whom the institution has documented verification of employment. For occupations for which the state requires passing an examination, the six months period begins after the announcement of the examination results for the first examination available after a student completes an applicable educational program.
- “Placement Rate Employed in the Field” is calculated by dividing the number of graduates gainfully employed in the field by the number of graduates available for employment.
- “Number of Graduates Taking Exam” is the number of graduates who took the first available exam in the reported calendar year.
- “First Available Exam Date” is the date for the first available exam after a student completed a program.
- “Passage Rate” is calculated by dividing the number of graduates who passed the exam by the number of graduates who took the reported licensing exam.
- “Number Who Passed First Available Exam” is the number of graduates who took and passed the first available licensing exam after completing the program.
- “Salary” is as reported by graduate or graduate’s employer.
- “No Salary Information Reported” is the number of graduates for whom, after making reasonable attempts, the school was not able to obtain salary information.

**REDONDO BEACH BEAUTY COLLEGE**  
2205 W. ARTESIA BOULEVARD  
REDONDO BEACH, CA 90278  
Phone: (310) 370-7464 Fax: (310) 370-8227  
[www.rbbeautycollege.com](http://www.rbbeautycollege.com)



## **STUDENT'S RIGHT TO CANCEL**

**The student has the right to cancel** the enrollment agreement and obtain a full refund of charges paid, less a reasonable deposit or registration fee not to exceed one hundred fifty dollars (\$150), if notice of cancellation is made through attendance at the first class session (**first day of class to “first class day”, or the seven days after enrollment was signed**), whichever is later.

To obtain a refund, the student must provide a written notice to:

**Redondo Beach Beauty College**  
2205 W. Artesia Blvd  
Redondo Beach, CA 90278  
Phone (310)370-7464  
Fax (310)370-8227  
Email: [rbbeautycollege@yahoo.com](mailto:rbbeautycollege@yahoo.com)

If the institution gave the student any equipment, the student shall return the equipment within 30 days following the date of the Notice of Cancellation. If the student fails to return the equipment within this 30 day-period, the institution may retain that portion of the consideration paid by the student equal to the documented cost to the institution of the equipment and shall refund the portion of the consideration exceeding the documented cost to the institution of the equipment within 10 days after the period within which the student is required to return the equipment. The student may retain the equipment without further obligation to pay for it.

**Student's Initials:** \_\_\_\_\_ **Date:** \_\_\_\_\_

**Initial only after you have had sufficient time to read and understand the information.**





**REDONDO BEACH BEAUTY COLLEGE**  
**2205 W. ARTESIA BOULEVARD**  
**REDONDO BEACH, CA 90278**  
**Phone: (310) 370-7464 Fax: (310) 370-8227**  
[www.rbbeautycollege.com](http://www.rbbeautycollege.com)



**SCHOOL PERFORMANCE FACT SHEET**  
**Calendar Years 2017 & 2018**

Includes data for the two calendar years prior to reporting

**PROGRAM NAME: COSMETOLOGY                      PROGRAM LENGTH:                      1600 hours 50-80 Weeks**

**On-Time Completion Rates: (Graduation Rates)**

Calendar Year	Number of Students Who Began Program	Students Available for Graduation	Number of on-time Graduates	On-time Completion Rate
**2017	9	9	5	55.56%
**2018	7	7	3	42.85%

Student's Initials: \_\_\_\_\_ Date: \_\_\_\_\_  
**Initial only after you have had sufficient time to read and understand the information.**

**150% TABLE OPTIONAL**

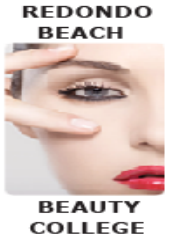
**Students Completing After within 150% of Published Program Length**

Calendar Year	Number of Students Who Began Program	Students Available for Graduation	150% Graduates	150% Completion Rate
**2017	N/A	N/A	N/A	N/A
**2018	N/A	N/A	N/A	N/A

\*\* Included if the program is more than one year in length.

Student's Initials: \_\_\_\_\_ Date: \_\_\_\_\_  
**Initial only after you have had sufficient time to read and understand the information.**

**REDONDO BEACH BEAUTY COLLEGE**  
**2205 W. ARTESIA BOULEVARD**  
**REDONDO BEACH, CA 90278**  
**Phone: (310) 370-7464 Fax: (310) 370-8227**  
[www.rbbeautycollege.com](http://www.rbbeautycollege.com)



**Job Placement Rates (includes data for the two calendar years prior to reporting)**

Calendar Year	Number of Student Who Began Program	Number of Graduate	Graduates Available for Employment	Graduates Employed in the Field	Placement Rate Employed in the Field
**2017	9	5	5	3	60%
**2018	7	3	3	0	0%

You may obtain from the institution a list of the employment positions determined to be in the field for which a student received education and training. **Please see below**

**\*39-5012 Hairdressers, Hairstylists, and Cosmetologists:** Provide beauty services, such as shampooing, cutting, coloring, and styling hair, and massaging and treating scalp. May apply makeup, dress wigs, perform hair removal, and provide nail and skin care services.

Annual Wages for 2019	Median Hourly	Median Annually
Los Angeles	\$12.30	\$25,599

The US Department of Labor, Bureau of Statistics has provided us with the salary/wage information on persons employed in our programs.

You may obtain a list of the employment positions determined to be within the field that the education received in this program will prepare you for, a list of the source of information used to substantiate the above salary disclosure, and a description of the manner in which the figures provided above have been calculated from the Admissions & Placement Office or visit [www.labormarketinfo.edd.ca.gov](http://www.labormarketinfo.edd.ca.gov)

**Gainful Employment Categories (includes data for the two calendar years prior to reporting)**

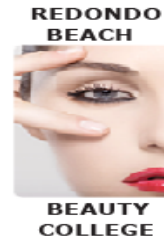
**Part Time vs. Full Time Employment**

Calendar Year	“Part-Time” Graduates Employed in the field 20 to 29 hours per week	“Full-Time” Graduates Employed in at least 30 hours per week	Total Graduates Employed in the Field
**2017	3	0	3
**2018	0	0	0

**Student's Initials:** \_\_\_\_\_ **Date:** \_\_\_\_\_

**Initial only after you have had sufficient time to read and understand the information.**

**REDONDO BEACH BEAUTY COLLEGE**  
**2205 W. ARTESIA BOULEVARD**  
**REDONDO BEACH, CA 90278**  
**Phone: (310) 370-7464 Fax: (310) 370-8227**  
[www.rbbeautycollege.com](http://www.rbbeautycollege.com)



**Single Position vs. Concurrent Aggregated Positions**

Calendar Year	Graduates Employed in the field in the single position	Graduates Employed in the field in concurrent aggregated positions	Total Graduates Employed in the Field
**2017	3	N/A	3
**2018	0	N/A	0

**Self-Employed/Freelance Positions**

Calendar Year	Graduates Employed who are self-employed or working freelance	Total Graduates Employed in the Field
**2017	N/A	N/A
**2018	N/A	N/A

**Institutional Employment**

Calendar Year	Graduates Employed in the field who are employed by the institution, an employer owned by the institution, or an employer who shares ownership with the institution	Total Graduates Employed in the Field
**2017	N/A	N/A
**2018	N/A	N/A

**Student's Initials:** \_\_\_\_\_ **Date:** \_\_\_\_\_

**Initial only after you have had sufficient time to read and understand the information.**

**IF the majority of graduates from this program obtain jobs in self-employment or freelance work add:**

This program may result in freelance or self-employment.

- The work available to graduates of this program is usually for freelance or self-employment.
- This type of work may not be consistent.
- The period of employment can range from one day to weeks to several months.
- Hours worked in a day or week may be more or less than the traditional 8 hour work day or 40 hour work week.
- You can expect to spend unpaid time expanding your networks, advertising, promoting your services, or honing your skills.
- Once graduates begin to work freelance or are self-employed, they will be asked to provide documentation that they are employed as such so that they may be counted as placed for our job placement records.
- Students initialing this disclosure understand that either a majority or all of this school's graduates are employed in this manner and understand what comprises this work style.

**Student's Initials:** \_\_\_\_\_ **Date:** \_\_\_\_\_

**Only initial after you have had sufficient time to read and understand the information.**

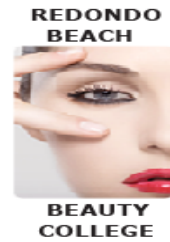
**REDONDO BEACH BEAUTY COLLEGE**

2205 W. ARTESIA BOULEVARD

REDONDO BEACH, CA 90278

Phone: (310) 370-7464 Fax: (310) 370-8227

[www.rbbeautycollege.com](http://www.rbbeautycollege.com)



**License Examination Passage Rates (includes data for the two calendar years prior to reporting)**

Calendar Year	Number of Graduates in Calendar Year	Number of Graduates Taking Exam	Number Who Passed First Available Exam	Number Who Failed First Available Exam	Passage Rate
**2017	9	4	4	0	100%
**2018	3	3	1	2	33.33%

Licensure examination passage data is available from the state agency administering the examination and also in student file.

Student's Initials: \_\_\_\_\_ Date: \_\_\_\_\_

Initial only after you have had sufficient time to read and understand the information.

**Salary and Wage Information(includes data for the two calendar years prior to reporting)**

**Annual Salary and Wages Reported for Graduates Employed in the Field**

Calendar Year	Graduates Available for Employment	Graduates Employed in Field	\$5,000-\$10,000	\$10,001-\$15,000	\$25,001-30,000	\$30,001-\$35,001	No Salary Information Reported
**2017	5	3	2	1	N/A	N/A	0
**2018	0	0	N/A	N/A	N/A	N/A	0

A list of sources used to substantiate salary disclosures is available from the school. (Insert how student can obtain this information.)

Student's Initials: \_\_\_\_\_ Date: \_\_\_\_\_

Initial only after you have had sufficient time to read and understand the information.

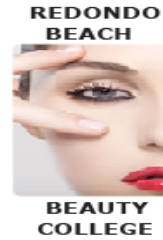
**Cost of Educational Program**

Total charges for the program for students completing on-time in 2018: **\$12,950.00** Additional charges may be incurred if the program is not completed on-time.

Student's Initials: \_\_\_\_\_ Date: \_\_\_\_\_

Initial only after you have had sufficient time to read and understand the information.

**REDONDO BEACH BEAUTY COLLEGE**  
**2205 W. ARTESIA BOULEVARD**  
**REDONDO BEACH, CA 90278**  
**Phone: (310) 370-7464 Fax: (310) 370-8227**  
[www.rbbeautycollege.com](http://www.rbbeautycollege.com)



**Federal Student Loan Debt**

<b>(A) Most recent three year cohort default rate, as reported by the United State Department of Education.</b> <small>School Default Rate  FY 2016, 2015, and 2014  Print from nslds.ed.gov 10/16/2019</small>	<b>(B)The percentage of enrolled students in 2018 receiving federal student loans to pay for this program.</b>	<b>© The average amount of Federal student loan debt of those graduates who have Federal student loan debt in the reporting year 2018</b>	<b>(D)The percentage of graduates in 2018 with Federal student loans as calculated by the institution.</b>
<b>0%</b>	<b>14%</b>	<b>\$0.00</b>	<b>0%</b>

The percentage of students who defaulted on their federal student loans is called the Cohort Default Rate (CDR). It shows the percentage of this school’s students who were more than 270 days (9 months) behind on their federal student loans within three years of when the first payment was due. This is the most recent CDR reported by the U.S. Department of Education.

**Student’s Initials:** \_\_\_\_\_ **Date:** \_\_\_\_\_

**Initial only after you have had sufficient time to read and understand the information.**

This fact sheet is filed with the Bureau for Private Postsecondary Education. Regardless of any information you may have relating to completion rates, placement rates, starting salaries, or license exam passage rates, this fact sheet contains the information as calculated pursuant to state law.

Any questions a student may have regarding this fact sheet that have not been satisfactorily answered by the institution may be directed to the Bureau for Private Postsecondary Education at 2535 Capitol Oaks Drive, Suite 400, Sacramento, CA 95833, [www.bppe.ca.gov](http://www.bppe.ca.gov), toll-free telephone number (888) 370-7589 or by fax (916) 263-1897.

\_\_\_\_\_  
Student Name-Print

\_\_\_\_\_  
Student Signature

\_\_\_\_\_  
Date

\_\_\_\_\_  
School Official

\_\_\_\_\_  
Date

**REDONDO BEACH BEAUTY COLLEGE**

**2205 W. ARTESIA BOULEVARD**

**REDONDO BEACH, CA 90278**

**Phone: (310) 370-7464 Fax: (310) 370-8227**

[www.rbbeautycollege.com](http://www.rbbeautycollege.com)



**Definitions**

- “Number of Students Who Began the Program” means the number of students who began a program who were scheduled to complete the program within 100% of the published program length within the reporting calendar year and excludes all students who cancelled during the cancellation period.
- “Students Available for Graduation” is the number of students who began the program minus the number of students who have died, been incarcerated, or been called to active military duty.
- “Number of On-time Graduates” is the number of students who completed the program within 100% of the published program length within the reporting calendar year.
- “On-time Completion Rate” is the number of on-time graduates divided by the number of students available for graduation.
- “150% Graduates” is the number of students who completed the program within 150% of the program length (includes on-time graduates).
- “150% Completion Rate” is the number of students who completed the program in the reported calendar year within 150% of the published program length, including on-time graduates, divided by the number of students available for graduation.
- “Graduates Available for Employment” means the number of graduates minus the number of graduates unavailable for employment.
- “Graduates Unavailable for Employment” means the graduate who, after graduation, dies, become incarcerated, are called to active military duty, are international students that leave the United States or do not have a visa allowing employment in the United States, or are continuing their education in an accredited or bureau-approved postsecondary institution.
- “Graduates employed in the Field” means a graduate who beginning within six months after a student completes the applicable educational program are gainfully employed, whose employment has been reported, and for whom the institution has documented verification of employment. For occupations for which the state requires passing an examination, the six months period begins after the announcement of the examination results for the first examination available after a student completes an applicable educational program.
- “Placement Rate Employed in the Field” is calculated by dividing the number of graduates gainfully employed in the field by the number of graduates available for employment.
- “Number of Graduates Taking Exam” is the number of graduates who took the first available exam in the reported calendar year.
- “First Available Exam Date” is the date for the first available exam after a student completed a program.
- “Passage Rate” is calculated by dividing the number of graduates who passed the exam by the number of graduates who took the reported licensing exam.
- “Number Who Passed First Available Exam” is the number of graduates who took and passed the first available licensing exam after completing the program.
- “Salary” is as reported by graduate or graduate’s employer.
- “No Salary Information Reported” is the number of graduates for whom, after making reasonable attempts, the school was not able to obtain salary information.

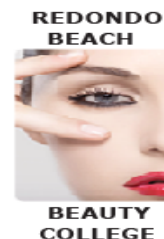
**REDONDO BEACH BEAUTY COLLEGE**

**2205 W. ARTESIA BOULEVARD**

**REDONDO BEACH, CA 90278**

**Phone: (310) 370-7464 Fax: (310) 370-8227**

[www.rbbeautycollege.com](http://www.rbbeautycollege.com)



**STUDENT'S RIGHT TO CANCEL**

**The student has the right to cancel** the enrollment agreement and obtain a full refund of charges paid, less a reasonable deposit or registration fee not to exceed one hundred fifty dollars (\$150), if notice of cancellation is made through attendance at the first class session (**first day of class to “first class day”, or the seven days after enrollment was signed**), whichever is later.

To obtain a refund, the student must provide a written notice to:

**Redondo Beach Beauty College**

**2205 W. Artesia Blvd.,**

**Redondo Beach, CA 90278**

**Phone (310)370-7464**

**Fax (310)370-8227**

**Email: [rbbeautycollege@yahoo.com](mailto:rbbeautycollege@yahoo.com)**

If the institution gave the student any equipment, the student shall return the equipment within 30 days following the date of the Notice of Cancellation. If the student fails to return the equipment within this 30 day-period, the institution may retain that portion of the consideration paid by the student equal to the documented cost to the institution of the equipment and shall refund the portion of the consideration exceeding the documented cost to the institution of the equipment within 10 days after the period within which the student is required to return the equipment. The student may retain the equipment without further obligation to pay for it.

**Student's Initials: \_\_\_\_\_ Date: \_\_\_\_\_**

**Initial only after you have had sufficient time to read and understand the information.**





**REDONDO BEACH BEAUTY COLLEGE**  
**2205 W. ARTESIA BOULEVARD**  
**REDONDO BEACH, CA 90278**  
**Phone: (310) 370-7464 Fax: (310) 370-8227**  
[www.rbbeautycollege.com](http://www.rbbeautycollege.com)

**SCHOOL PERFORMANCE FACT SHEET**  
**Calendar Years 2017 & 2018**

**PROGRAM NAME: ESTHETICIAN                      PROGRAM LENGTH: 600 hours 15-30 Weeks**

**On-Time Completion Rates: (Graduation Rates)**  
 Includes data for the two calendar years prior to reporting

Calendar Year	Number of Students Who Began Program	Students Available for Graduation	Number of on-time Graduates	On-time Completion Rate
**2017	7	7	7	100%
**2018	15	14	13	93%

Student's Initials: \_\_\_\_\_ Date: \_\_\_\_\_  
 Initial only after you have had sufficient time to read and understand the information.

**150% TABLE OPTIONAL (Program less than one year)**

**Students Completing After Published Program Length - 150% completion Rate (101-150%)**

Calendar Year	Number of Students Who Began Program	Students Available for Graduation	150% Graduates	150% Completion Rate
**2017	N/A	N/A	N/A	N/A
**2018	N/A	N/A	N/A	N/A

\*\* Included if the program is more than one year in length.

Student's Initials: \_\_\_\_\_ Date: \_\_\_\_\_  
 Initial only after you have had sufficient time to read and understand the information.

**REDONDO BEACH BEAUTY COLLEGE**  
**2205 W. ARTESIA BOULEVARD**  
**REDONDO BEACH, CA 90278**  
**Phone: (310) 370-7464 Fax: (310) 370-8227**  
[www.rbbeautycollege.com](http://www.rbbeautycollege.com)



**Job Placement Rates (includes data for the two calendar years prior to reporting)**

Calendar Year	Number of Student Who Began Program	Number of Graduate	Graduates Available for Employment	Graduates Employed in the Field	Placement Rate Employed in the Field
**2017	7	7	7	4	57.14%
**2018	15	14	14	7	50%

You may obtain from the institution a list of the employment positions determined to be in the field for which a student received education and training. **Please see below**

**39-5094 Skincare Specialists:** Provide skincare treatments to face and body to enhance an individual's appearance.

Annual Wages for 2019	Median Hourly	Median Annually
Los Angeles	\$14.66	\$39,482.00

The US Department of Labor, Bureau of Statistics has provided us with the salary/wage information on persons employed in our programs.

You may obtain a list of the employment positions determined to be within the field that the education received in this program will prepare you for, a list of the source of information used to substantiate the above salary disclosure, and a description of the manner in which the figures provided above have been calculated from the Admissions & Placement Office visit [www.labormarketinfo.edd.ca.gov](http://www.labormarketinfo.edd.ca.gov)

**Gainful Employment Categories (includes data for the two calendar years prior to reporting)**

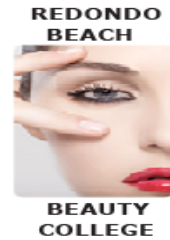
**Part Time vs. Full Time Employment**

Calendar Year	“Part-Time” Graduates Employed in the field 20 to 29 hours per week	“Full-Time” Graduates Employed in at least 30 hours per week	Total Graduates Employed in the Field
**2017	3	1	4
**2018	4	3	7

**Student's Initials:** \_\_\_\_\_ **Date:** \_\_\_\_\_

**Initial only after you have had sufficient time to read and understand the information.**

**REDONDO BEACH BEAUTY COLLEGE**  
**2205 W. ARTESIA BOULEVARD**  
**REDONDO BEACH, CA 90278**  
**Phone: (310) 370-7464 Fax: (310) 370-8227**  
[www.rbbeautycollege.com](http://www.rbbeautycollege.com)



**Single Position vs. Concurrent Aggregated Positions**

Calendar Year	Graduates Employed in the field in the single position	Graduates Employed in the field in concurrent aggregated positions	Total Graduates Employed in the Field
**2017	3	N/A	3
**2018	7	N/A	7

**Self-Employed/Freelance Positions**

Calendar Year	Graduates Employed who are self-employed or working freelance	Total Graduates Employed in the Field
**2017	1	1
**2018	N/A	N/A

**Institutional Employment**

Calendar Year	Graduates Employed in the field who are employed by the institution, an employer owned by the institution, or an employer who shares ownership with the institution	Total Graduates Employed in the Field
**2017	N/A	N/A
**2018	N/A	N/A

**Student's Initials:** \_\_\_\_\_ **Date:** \_\_\_\_\_

**Initial only after you have had sufficient time to read and understand the information.**

**IF the majority of graduates from this program obtain jobs in self-employment or freelance work add:**

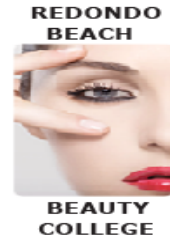
This program may result in freelance or self-employment.

- the work available to graduates of this program is usually for freelance or self-employment.
- This type of work may not be consistent.
- The period of employment can range from one day to weeks to several months.
- Hours worked in a day or week may be more or less than the traditional 8 hour work day or 40 hour work week.
- You can expect to spend unpaid time expanding your networks, advertising, promoting your services, or honing your skills.
- Once graduates begin to work freelance or are self-employed, they will be asked to provide documentation that they are employed as such so that they may be counted as placed for our job placement records.
- Students initialing this disclosure understand that either a majority or all of this school's graduates are employed in this manner and understand what comprises this work style.

**Student's Initials:** \_\_\_\_\_ **Date:** \_\_\_\_\_

**Only initial after you have had sufficient time to read and understand the information**

**REDONDO BEACH BEAUTY COLLEGE**  
**2205 W. ARTESIA BOULEVARD**  
**REDONDO BEACH, CA 90278**  
**Phone: (310) 370-7464 Fax: (310) 370-8227**  
[www.rbbeautycollege.com](http://www.rbbeautycollege.com)



**License Examination Passage Rates (includes data for the two calendar years prior to reporting)**

Calendar Year	Number of Graduates in Calendar Year	Number of Graduates Taking Exam	Number Who Passed First Available Exam	Number Who Failed First Available Exam	Passage Rate
**2017	7	5	5	0	100%
**2018	14	13	10	3	76.92%

Licensure examination passage data is available from the state agency administering the examination and also in student's file.

**Student's Initials: \_\_\_\_\_ Date: \_\_\_\_\_**

**Initial only after you have had sufficient time to read and understand the information.**

**Salary and Wage Information(includes data for the two calendar years prior to reporting)**

**Annual Salary and Wages Reported for Graduates Employed in the Field**

Calendar Year	Graduates Available for Employment	Graduates Employed in Field	\$10,000-\$15,000	\$15,001-\$20,000	\$20,001-\$30,000	\$30,001-\$35,001	No Salary Information Reported
**2017	7	4	1	3	0	0	0
**2018	14	7	4	3	0	0	0

A list of sources used to substantiate salary disclosures is available from the school. (Insert how student can obtain this information.)

**Student's Initials: \_\_\_\_\_ Date: \_\_\_\_\_**

**Initial only after you have had sufficient time to read and understand the information.**

**Cost of Educational Program**

Total charges for the program for students completing on-time **in 2018: \$6,500.00** Additional charges may be incurred if the program is not completed on-time.

**Student's Initials: \_\_\_\_\_ Date: \_\_\_\_\_**

**Initial only after you have had sufficient time to read and understand the information.**

**REDONDO BEACH BEAUTY COLLEGE**  
**2205 W. ARTESIA BOULEVARD**  
**REDONDO BEACH, CA 90278**  
**Phone: (310) 370-7464 Fax: (310) 370-8227**  
[www.rbbeautycollege.com](http://www.rbbeautycollege.com)



**Federal Student Loan Debt**

<b>(A) Most recent three year cohort default rate, as reported by the United State Department of Education.</b> School Default Rate FY 2016, 2015, and 2014 <small>Print from nslds.ed.gov 10/16/2019</small>	<b>(B) The percentage of enrolled students in 2018 receiving federal student loans to pay for this program.</b>	<b>© The average amount of Federal student loan debt of those graduates who have Federal student loan debt in the reporting year 2018</b>	<b>(D) The percentage of graduates in 2018 with Federal student loans as calculated by the institution.</b>
<b>0%</b>	<b>60%</b>	<b>\$32,692</b>	<b>100%</b>

The percentage of students who defaulted on their federal student loans is called the Cohort Default Rate (CDR). It shows the percentage of this school’s students who were more than 270 days (9 months) behind on their federal student loans within three years of when the first payment was due. This is the most recent CDR reported by the U.S. Department of Education.

**Student’s Initials:** \_\_\_\_\_ **Date:** \_\_\_\_\_

**Initial only after you have had sufficient time to read and understand the information.**

This fact sheet is filed with the Bureau for Private Postsecondary Education. Regardless of any information you may have relating to completion rates, placement rates, starting salaries, or license exam passage rates, this fact sheet contains the information as calculated pursuant to state law.

Any questions a student may have regarding this fact sheet that have not been satisfactorily answered by the institution may be directed to the Bureau for Private Postsecondary Education at 2535 Capitol Oaks Drive, Suite 400, Sacramento, CA 95833, [www.bppe.ca.gov](http://www.bppe.ca.gov), toll-free telephone number (888) 370-7589 or by fax (916) 263-1897.

\_\_\_\_\_  
 Student Name-Print

\_\_\_\_\_  
 Student Signature

\_\_\_\_\_  
 Date

\_\_\_\_\_  
 School Official

\_\_\_\_\_  
 Date

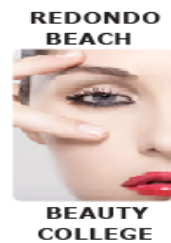
## **REDONDO BEACH BEAUTY COLLEGE**

**2205 W. ARTESIA BOULEVARD**

**REDONDO BEACH, CA 90278**

**Phone: (310) 370-7464 Fax: (310) 370-8227**

[www.rbbeautycollege.com](http://www.rbbeautycollege.com)



### **Definitions**

- “Number of Students Who Began the Program” means the number of students who began a program who were scheduled to complete the program within 100% of the published program length within the reporting calendar year and excludes all students who cancelled during the cancellation period.
- “Students Available for Graduation” is the number of students who began the program minus the number of students who have died, been incarcerated, or been called to active military duty.
- “Number of On-time Graduates” is the number of students who completed the program within 100% of the published program length within the reporting calendar year.
- “On-time Completion Rate” is the number of on-time graduates divided by the number of students available for graduation.
- “150% Graduates” is the number of students who completed the program within 150% of the program length (includes on-time graduates).
- “150% Completion Rate” is the number of students who completed the program in the reported calendar year within 150% of the published program length, including on-time graduates, divided by the number of students available for graduation.
- “Graduates Available for Employment” means the number of graduates minus the number of graduates unavailable for employment.
- “Graduates Unavailable for Employment” means the graduate who, after graduation, dies, become incarcerated, are called to active military duty, are international students that leave the United States or do not have a visa allowing employment in the United States, or are continuing their education in an accredited or bureau-approved postsecondary institution.
- “Graduates employed in the Field” means a graduate who beginning within six months after a student completes the applicable educational program are gainfully employed, whose employment has been reported, and for whom the institution has documented verification of employment. For occupations for which the state requires passing an examination, the six months period begins after the announcement of the examination results for the first examination available after a student completes an applicable educational program.
- “Placement Rate Employed in the Field” is calculated by dividing the number of graduates gainfully employed in the field by the number of graduates available for employment.
- “Number of Graduates Taking Exam” is the number of graduates who took the first available exam in the reported calendar year.
- “First Available Exam Date” is the date for the first available exam after a student completed a program.
- “Passage Rate” is calculated by dividing the number of graduates who passed the exam by the number of graduates who took the reported licensing exam.
- “Number Who Passed First Available Exam” is the number of graduates who took and passed the first available licensing exam after completing the program.
- “Salary” is as reported by graduate or graduate’s employer.
- “No Salary Information Reported” is the number of graduates for whom, after making reasonable attempts, the school was not able to obtain salary information.

**REDONDO BEACH BEAUTY COLLEGE**  
2205 W. ARTESIA BOULEVARD  
REDONDO BEACH, CA 90278  
Phone: (310) 370-7464 Fax: (310) 370-8227  
[www.rbbeautycollege.com](http://www.rbbeautycollege.com)



## **STUDENT'S RIGHT TO CANCEL**

**The student has the right to cancel** the enrollment agreement and obtain a full refund of charges paid, less a reasonable deposit or registration fee not to exceed one hundred fifty dollars (\$150), if notice of cancellation is made through attendance at the first class session (**first day of class to “first class day”, or the seven days after enrollment was signed**), whichever is later.

To obtain a refund, the student must provide a written notice to:

**Redondo Beach Beauty College,  
2205 W. Artesia Blvd.,  
Redondo Beach, CA 90278.  
Phone (310)370-7464  
Fax (310)370-8227  
Email: [rbbeautycollege@yahoo.com](mailto:rbbeautycollege@yahoo.com)**

If the institution gave the student any equipment, the student shall return the equipment within 30 days following the date of the Notice of Cancellation. If the student fails to return the equipment within this 30 day-period, the institution may retain that portion of the consideration paid by the student equal to the documented cost to the institution of the equipment and shall refund the portion of the consideration exceeding the documented cost to the institution of the equipment within 10 days after the period within which the student is required to return the equipment. The student may retain the equipment without further obligation to pay for it.

**Student's Initials:** \_\_\_\_\_ **Date:** \_\_\_\_\_

**Initial only after you have had sufficient time to read and understand the information.**





**REDONDO BEACH BEAUTY COLLEGE**  
**2205 W. ARTESIA BOULEVARD**  
**REDONDO BEACH, CA 90278**  
**Phone: (310) 370-7464 Fax: (310) 370-8227**  
[www.rbbeautycollege.com](http://www.rbbeautycollege.com)



**SCHOOL PERFORMANCE FACT SHEET**  
**Calendar Years 2017 & 2018**

**PROGRAM NAME: TEACHER TRAINING    PROGRAM LENGTH:    600 hours 15-30 Weeks**

**On-Time Completion Rates: (Graduation Rates)**

Includes data for the two calendar years prior to reporting

Calendar Year	Number of Students Who Began Program	Students Available for Graduation	Number of on-time Graduates	On-time Completion Rate
**2017	N/A	N/A	N/A	N/A
**2018	N/A	N/A	N/A	N/A

Student's Initials: \_\_\_\_\_ Date: \_\_\_\_\_

Initial only after you have had sufficient time to read and understand the information.

**150% TABLE OPTIONAL (Program less than one year)**

**Students Completing After within 150% of Published Program Length**

Calendar Year	Number of Students Who Began Program	Students Available for Graduation	150% Graduates	150% Completion Rate
**2017	N/A	N/A	N/A	N/A
**2018	N/A	N/A	N/A	N/A

\*\* Included if the program is more than one year in length.

Student's Initials: \_\_\_\_\_ Date: \_\_\_\_\_

Initial only after you have had sufficient time to read and understand the information.

**REDONDO BEACH BEAUTY COLLEGE**

2205 W. ARTESIA BOULEVARD

REDONDO BEACH, CA 90278

Phone: (310) 370-7464 Fax: (310) 370-8227

[www.rbbeautycollege.com](http://www.rbbeautycollege.com)**Job Placement Rates (includes data for the two calendar years prior to reporting)**

Calendar Year	Number of Student Who Began Program	Number of Graduate	Graduates Available for Employment	Graduates Employed in the Field	Placement Rate Employed in the Field
**2017	N/A	N/A	N/A	N/A	N/A
**2018	N/A	N/A	N/A	N/A	N/A

You may obtain from the institution a list of the employment positions determined to be in the field for which a student received education and training. **(Insert how student can obtain this information.)** Please see below **25-1194 Vocational Education Teachers, Postsecondary**: Teach or instruct vocational or occupational subjects at the postsecondary level (but at less than the baccalaureate) to students who have graduated or left high school. Includes correspondence school instructors; industrial, commercial, and government training instructors; and adult education teachers and instructors who prepare persons to operate industrial machinery and equipment and transportation and communications equipment. Teaching may take place in public or private schools whose primary business is education or in a school associated with an organization whose primary business is other than education.

**Illustrative examples:** *Mechanical Maintenance Instructor, Cosmetology Professor, Barbering Instructor*

Annual Wages for 2019	Median Hourly	Median Annually
Los Angeles	\$30.55	\$63,551.00

The US Department of Labor, Bureau of Statistics has provided us with the salary/wage information on persons employed in our programs.

You may obtain a list of the employment positions determined to be within the field that the education received in this program will prepare you for, a list of the source of information used to substantiate the above salary disclosure, and a description of the manner in which the figures provided above have been calculated from the Admissions & Placement Office or visit [www.labormarketinfo.edd.ca.gov](http://www.labormarketinfo.edd.ca.gov)

**Gainful Employment Categories (includes data for the two calendar years prior to reporting)****Part Time vs. Full Time Employment**

Calendar Year	"Part-Time" Graduates Employed in the field 20 to 29 hours per week	"Full-Time" Graduates Employed in at least 30 hours per week	Total Graduates Employed in the Field
**2017	N/A	N/A	N/A
**2018	N/A	N/A	N/A

**Student's Initials:** \_\_\_\_\_ **Date:** \_\_\_\_\_

**Initial only after you have had sufficient time to read and understand the information.\**

**REDONDO BEACH BEAUTY COLLEGE**  
 2205 W. ARTESIA BOULEVARD  
 REDONDO BEACH, CA 90278  
 Phone: (310) 370-7464 Fax: (310) 370-8227  
[www.rbbeautycollege.com](http://www.rbbeautycollege.com)



**Single Position vs. Concurrent Aggregated Positions**

Calendar Year	Graduates Employed in the field in the single position	Graduates Employed in the field in concurrent aggregated positions	Total Graduates Employed in the Field
**2017	N/A	N/A	N/A
**2018	N/A	N/A	N/A

**Self-Employed/Freelance Positions**

Calendar Year	Graduates Employed who are self-employed or working freelance	Total Graduates Employed in the Field
**2017	N/A	N/A
**2018	N/A	N/A

**Institutional Employment**

Calendar Year	Graduates Employed in the field who are employed by the institution, an employer owned by the institution, or an employer who shares ownership with the institution	Total Graduates Employed in the Field
**2017	N/A	N/A
**2018	N/A	N/A

**Student's Initials:** \_\_\_\_\_ **Date:** \_\_\_\_\_

**Initial only after you have had sufficient time to read and understand the information.**

**IF the majority of graduates from this program obtain jobs in self-employment or freelance work add:**

This program may result in freelance or self-employment.

- the work available to graduates of this program is usually for freelance or self-employment.
- This type of work may not be consistent.
- The period of employment can range from one day to weeks to several months.
- Hours worked in a day or week may be more or less than the traditional 8 hour work day or 40 hour work week.
- You can expect to spend unpaid time expanding your networks, advertising, promoting your services, or honing your skills.
- Once graduates begin to work freelance or are self-employed, they will be asked to provide documentation that they are employed as such so that they may be counted as placed for our job placement records.
- Students initialing this disclosure understand that either a majority or all of this school's graduates are employed in this manner and understand what comprises this work style.

**Student's Initials:** \_\_\_\_\_ **Date:** \_\_\_\_\_

**Only initial after you have had sufficient time to read and understand the information.**

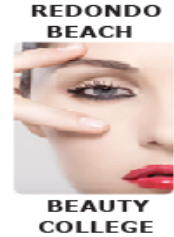
**REDONDO BEACH BEAUTY COLLEGE**

2205 W. ARTESIA BOULEVARD

REDONDO BEACH, CA 90278

Phone: (310) 370-7464 Fax: (310) 370-8227

[www.rbbeautycollege.com](http://www.rbbeautycollege.com)



**License Examination Passage Rates (includes data for the two calendar years prior to reporting)**

Calendar Year	Number of Graduates in Calendar Year	Number of Graduates Taking Exam	Number Who Passed First Available Exam	Number Who Failed First Available Exam	Passage Rate
**2017	N/A	N/A	N/A	N/A	N/A
**2018	N/A	N/A	N/A	N/A	N/A

Licensure examination passage data is available from the state agency administering the examination and also in student's file.

Student's Initials: \_\_\_\_\_ Date: \_\_\_\_\_

Initial only after you have had sufficient time to read and understand the information.

**Salary and Wage Information(includes data for the two calendar years prior to reporting)**

**Annual Salary and Wages Reported for Graduates Employed in the Field**

Calendar Year	Graduates Available for Employment	Graduates Employed in Field	\$15,000-\$20,000	\$20,001-\$25,000	\$25,001-30,000	\$30,001-\$35,001	No Salary Information Reported
**2017	N/A	N/A	N/A	N/A	N/A	N/A	N/A
**2018	N/A	N/A	N/A	N/A	N/A	N/A	N/A

A list of sources used to substantiate salary disclosures is available from the school. (Insert how student can obtain this information.)

Student's Initials: \_\_\_\_\_ Date: \_\_\_\_\_

Initial only after you have had sufficient time to read and understand the information.

**Cost of Educational Program**

Total charges for the program for students completing on-time in 2017: \$5,450.00 Additional charges may be incurred if the program is not completed on-time.

Student's Initials: \_\_\_\_\_ Date: \_\_\_\_\_

Initial only after you have had sufficient time to read and understand the information.

**REDONDO BEACH BEAUTY COLLEGE**

**2205 W. ARTESIA BOULEVARD**

**REDONDO BEACH, CA 90278**

**Phone: (310) 370-7464 Fax: (310) 370-8227**

[www.rbbeautycollege.com](http://www.rbbeautycollege.com)



**Federal Student Loan Debt**

<b>(A) Most recent three year cohort default rate, as reported by the United State Department of Education.</b> School Default Rate FY 2016, 2015, and 2014 <small>Print from nslds.ed.gov 10/16/2019</small>	<b>(B)The percentage of enrolled students in 2018 receiving federal student loans to pay for this program.</b>	<b>© The average amount of Federal student loan debt of those graduates who have Federal student loan debt in the reporting year 2018</b>	<b>(D)The percentage of graduates in 2018 with Federal student loans as calculated by the institution.</b>
N/A	N/A	N/A	N/A

The percentage of students who defaulted on their federal student loans is called the Cohort Default Rate (CDR). It shows the percentage of this school’s students who were more than 270 days (9 months) behind on their federal student loans within three years of when the first payment was due. This is the most recent CDR reported by the U.S. Department of Education.

**Student’s Initials:** \_\_\_\_\_ **Date:** \_\_\_\_\_

**Initial only after you have had sufficient time to read and understand the information.**

This fact sheet is filed with the Bureau for Private Postsecondary Education. Regardless of any information you may have relating to completion rates, placement rates, starting salaries, or license exam passage rates, this fact sheet contains the information as calculated pursuant to state law.

Any questions a student may have regarding this fact sheet that have not been satisfactorily answered by the institution may be directed to the Bureau for Private Postsecondary Education at 2535 Capitol Oaks Drive, Suite 400, Sacramento, CA 95833, [www.bppe.ca.gov](http://www.bppe.ca.gov), toll-free telephone number (888) 370-7589 or by fax (916) 263-1897.

\_\_\_\_\_  
Student Name-Print

\_\_\_\_\_  
Student Signature

\_\_\_\_\_  
Date

\_\_\_\_\_  
School Official

\_\_\_\_\_  
Date

## **REDONDO BEACH BEAUTY COLLEGE**

**2205 W. ARTESIA BOULEVARD**

**REDONDO BEACH, CA 90278**

**Phone: (310) 370-7464 Fax: (310) 370-8227**

[www.rbbeautycollege.com](http://www.rbbeautycollege.com)



### **Definitions**

- “Number of Students Who Began the Program” means the number of students who began a program who were scheduled to complete the program within 100% of the published program length within the reporting calendar year and excludes all students who cancelled during the cancellation period.
- “Students Available for Graduation” is the number of students who began the program minus the number of students who have died, been incarcerated, or been called to active military duty.
- “Number of On-time Graduates” is the number of students who completed the program within 100% of the published program length within the reporting calendar year.
- “On-time Completion Rate” is the number of on-time graduates divided by the number of students available for graduation.
- “150% Graduates” is the number of students who completed the program within 150% of the program length (includes on-time graduates).
- “150% Completion Rate” is the number of students who completed the program in the reported calendar year within 150% of the published program length, including on-time graduates, divided by the number of students available for graduation.
- “Graduates Available for Employment” means the number of graduates minus the number of graduates unavailable for employment.
- “Graduates Unavailable for Employment” means the graduate who, after graduation, dies, become incarcerated, are called to active military duty, are international students that leave the United States or do not have a visa allowing employment in the United States, or are continuing their education in an accredited or bureau-approved postsecondary institution.
- “Graduates employed in the Field” means a graduate who beginning within six months after a student completes the applicable educational program are gainfully employed, whose employment has been reported, and for whom the institution has documented verification of employment. For occupations for which the state requires passing an examination, the six months period begins after the announcement of the examination results for the first examination available after a student completes an applicable educational program.
- “Placement Rate Employed in the Field” is calculated by dividing the number of graduates gainfully employed in the field by the number of graduates available for employment.
- “Number of Graduates Taking Exam” is the number of graduates who took the first available exam in the reported calendar year.
- “First Available Exam Date” is the date for the first available exam after a student completed a program.
- “Passage Rate” is calculated by dividing the number of graduates who passed the exam by the number of graduates who took the reported licensing exam.
- “Number Who Passed First Available Exam” is the number of graduates who took and passed the first available licensing exam after completing the program.
- “Salary” is as reported by graduate or graduate’s employer.
- “No Salary Information Reported” is the number of graduates for whom, after making reasonable attempts, the school was not able to obtain salary information.

**REDONDO BEACH BEAUTY COLLEGE**  
2205 W. ARTESIA BOULEVARD  
REDONDO BEACH, CA 90278  
Phone: (310) 370-7464 Fax: (310) 370-8227  
[www.rbbeautycollege.com](http://www.rbbeautycollege.com)



## **STUDENT'S RIGHT TO CANCEL**

**The student has the right to cancel** the enrollment agreement and obtain a full refund of charges paid, less a reasonable deposit or registration fee not to exceed one hundred fifty dollars (\$150), if notice of cancellation is made through attendance at the first class session (**first day of class to “first class day”, or the seven days after enrollment was signed**), whichever is later.

To obtain a refund, the student must provide a written notice to:

**Redondo Beach Beauty College**  
2205 W. Artesia Blvd  
Redondo Beach, CA 90278  
Phone (310)370-7464  
Fax (310)370-8227  
Email: [rbbeautycollege@yahoo.com](mailto:rbbeautycollege@yahoo.com)

If the institution gave the student any equipment, the student shall return the equipment within 30 days following the date of the Notice of Cancellation. If the student fails to return the equipment within this 30 day-period, the institution may retain that portion of the consideration paid by the student equal to the documented cost to the institution of the equipment and shall refund the portion of the consideration exceeding the documented cost to the institution of the equipment within 10 days after the period within which the student is required to return the equipment. The student may retain the equipment without further obligation to pay for it.

**Student's Initials:** \_\_\_\_\_ **Date:** \_\_\_\_\_

**Initial only after you have had sufficient time to read and understand the information.**





**REDONDO BEACH BEAUTY COLLEGE**  
**2205 W. ARTESIA BOULEVARD**  
**REDONDO BEACH, CA 90278**  
**Phone: (310) 370-7464 Fax: (310) 370-8227**  
[www.rbbeautycollege.com](http://www.rbbeautycollege.com)



**SCHOOL PERFORMANCE FACT SHEET**  
**Calendar Years 2017 & 2018**

Includes data for the two calendar years prior to reporting

**PROGRAM NAME: MANICURING                      PROGRAM LENGTH:      400 hours 10-20 Weeks**

**On-Time Completion Rates: (Graduation Rates)**

Calendar Year	Number of Students Who Began Program	Students Available for Graduation	Number of on-time Graduates	On-time Completion Rate
**2017	24	24	24	100%
**2018	52	51	51	100%

Student's Initials: \_\_\_\_\_ Date: \_\_\_\_\_

Initial only after you have had sufficient time to read and understand the information.

**150% TABLE OPTIONAL (Program less than one year)**

**Students Completing After within 150% of Published Program Length**

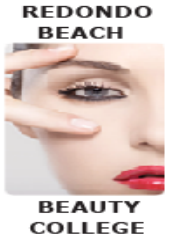
Calendar Year	Number of Students Who Began Program after within 150%	Students Available for Graduation	150% Graduates	150% Completion Rate
**2017	N/A	N/A	N/A	N/A
**2018	N/A	N/A	N/A	N/A

\*\* Included if the program is more than one year in length.

Student's Initials: \_\_\_\_\_ Date: \_\_\_\_\_

Initial only after you have had sufficient time to read and understand the information.

**REDONDO BEACH BEAUTY COLLEGE**  
**2205 W. ARTESIA BOULEVARD**  
**REDONDO BEACH, CA 90278**  
**Phone: (310) 370-7464 Fax: (310) 370-8227**  
[www.rbbeautycollege.com](http://www.rbbeautycollege.com)



**Job Placement Rates (includes data for the two calendar years prior to reporting)**

Calendar Year	Number of Student Who Began Program	Number of Graduate	Graduates Available for Employment	Graduates Employed in the Field	Placement Rate Employed in the Field
**2017	24	24	24	16	66.67%
**2018	52	51	51	31	60.79%

You may obtain from the institution a list of the employment positions determined to be in the field for which a student received education and training. **Please see below**

*39-5092 Manicurists and Pedicurists: Clean and shape customers' fingernails and toenails. May polish or decorate nails.*

Annual Wages for 2019	Median Hourly	Median Annually
<b>Los Angeles</b>	<b>\$12.27</b>	<b>\$25,517.00</b>

The US Department of Labor, Bureau of Statistics has provided us with the salary/wage information on persons employed in our programs.

You may obtain a list of the employment positions determined to be within the field that the education received in this program will prepare you for, a list of the source of information used to substantiate the above salary disclosure, and a description of the manner in which the figures provided above have been calculated from the Admissions & Placement Office or visit [www.labormarketinfo.edd.ca.gov](http://www.labormarketinfo.edd.ca.gov)

**Gainful Employment Categories (includes data for the two calendar years prior to reporting)**

**Part Time vs. Full Time Employment**

Calendar Year	“Part-Time” Graduates Employed in the field 20 to 29 hours per week	“Full-Time” Graduates Employed in at least 30 hours per week	Total Graduates Employed in the Field
**2017	9	5	14
**2018	27	4	31

**Student's Initials:** \_\_\_\_\_ **Date:** \_\_\_\_\_

**Initial only after you have had sufficient time to read and understand the information.**

**REDONDO BEACH BEAUTY COLLEGE**  
**2205 W. ARTESIA BOULEVARD**  
**REDONDO BEACH, CA 90278**  
**Phone: (310) 370-7464 Fax: (310) 370-8227**  
[www.rbbeautycollege.com](http://www.rbbeautycollege.com)



**Single Position vs. Concurrent Aggregated Positions**

Calendar Year	Graduates Employed in the field in the single position	Graduates Employed in the field in concurrent aggregated positions	Total Graduates Employed in the Field
**2017	16	N/A	16
**2018	31	N/A	31

**Self-Employed/Freelance Positions**

Calendar Year	Graduates Employed who are self-employed or working freelance	Total Graduates Employed in the Field
**2017	N/A	N/A
**2018	N/A	N/A

**Institutional Employment**

Calendar Year	Graduates Employed in the field who are employed by the institution, an employer owned by the institution, or an employer who shares ownership with the institution	Total Graduates Employed in the Field
**2017	N/A	N/A
**2018	N/A	N/A

**Student's Initials:** \_\_\_\_\_ **Date:** \_\_\_\_\_

**Initial only after you have had sufficient time to read and understand the information.**

**IF the majority of graduates from this program obtain jobs in self-employment or freelance work add:**

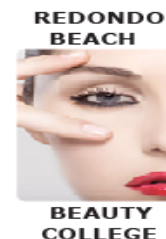
This program may result in freelance or self-employment.

- the work available to graduates of this program is usually for freelance or self-employment.
- This type of work may not be consistent.
- The period of employment can range from one day to weeks to several months.
- Hours worked in a day or week may be more or less than the traditional 8 hour work day or 40 hour work week.
- You can expect to spend unpaid time expanding your networks, advertising, promoting your services, or honing your skills.
- Once graduates begin to work freelance or are self-employed, they will be asked to provide documentation that they are employed as such so that they may be counted as placed for our job placement records.
- Students initialing this disclosure understand that either a majority or all of this school's graduates are employed in this manner and understand what comprises this work style.

**Student's Initials:** \_\_\_\_\_ **Date:** \_\_\_\_\_

**Only initial after you have had sufficient time to read and understand the information.**

**REDONDO BEACH BEAUTY COLLEGE**  
**2205 W. ARTESIA BOULEVARD**  
**REDONDO BEACH, CA 90278**  
**Phone: (310) 370-7464 Fax: (310) 370-8227**  
[www.rbbeautycollege.com](http://www.rbbeautycollege.com)



**License Examination Passage Rates (includes data for the two calendar years prior to reporting)**

Calendar Year	Number of Graduates in Calendar Year	Number of Graduates Taking Exam	Number Who Passed First Available Exam	Number Who Failed First Available Exam	Passage Rate
**2017	24	19	19	0	100%
**2018	51	47	35	12	74%

Licensure examination passage data is available from the state agency administering the examination and also in student file.

**Student's Initials: \_\_\_\_\_ Date: \_\_\_\_\_**

**Initial only after you have had sufficient time to read and understand the information.**

**Salary and Wage Information(includes data for the two calendar years prior to reporting)**

**Annual Salary and Wages Reported for Graduates Employed in the Field**

Calendar Year	Graduates Available for Employment	Graduates Employed in Field	\$5,000-\$10,000	\$10,001-\$15,000	\$25,001-30,000	\$30,001-\$35,001	No Salary Info Reported
**2017	24	16	N/A	N/A	N/A	N/A	N/A
**2018	51	31	N/A	31	N/A	N/A	24

A list of sources used to substantiate salary disclosures is available from the school. (Insert how student can obtain this information.)

**Student's Initials: \_\_\_\_\_ Date: \_\_\_\_\_**

**Initial only after you have had sufficient time to read and understand the information.**

**Cost of Educational Program**

Total charges for the program for students completing on-time **in 2018: \$1,500.00** Additional charges may be incurred if the program is not completed on-time.

**Student's Initials: \_\_\_\_\_ Date: \_\_\_\_\_**

**Initial only after you have had sufficient time to read and understand the information.**

**REDONDO BEACH BEAUTY COLLEGE**  
**2205 W. ARTESIA BOULEVARD**  
**REDONDO BEACH, CA 90278**  
**Phone: (310) 370-7464 Fax: (310) 370-8227**  
[www.rbbeautycollege.com](http://www.rbbeautycollege.com)



**Federal Student Loan Debt**

<b>(A) Most recent three year cohort default rate, as reported by the United State Department of Education.</b> <small>School Default Rate  FY 2016, 2015, and 2014  Print from nslds.ed.gov 10/16/2018</small>	<b>(B)The percentage of enrolled students in 2018 receiving federal student loans to pay for this program.</b>	<b>© The average amount of Federal student loan debt of those graduates who have Federal student loan debt in the reporting year 2018</b>	<b>(D)The percentage of graduates in 2018 with Federal student loans as calculated by the institution.</b>
<b>N/A</b>	<b>N/A</b>	<b>N/A</b>	<b>N/A</b>

The percentage of students who defaulted on their federal student loans is called the Cohort Default Rate (CDR). It shows the percentage of this school’s students who were more than 270 days (9 months) behind on their federal student loans within three years of when the first payment was due. This is the most recent CDR reported by the U.S. Department of Education.

**Student’s Initials:** \_\_\_\_\_ **Date:** \_\_\_\_\_

**Initial only after you have had sufficient time to read and understand the information.**

This fact sheet is filed with the Bureau for Private Postsecondary Education. Regardless of any information you may have relating to completion rates, placement rates, starting salaries, or license exam passage rates, this fact sheet contains the information as calculated pursuant to state law.

Any questions a student may have regarding this fact sheet that have not been satisfactorily answered by the institution may be directed to the Bureau for Private Postsecondary Education at 2535 Capitol Oaks Drive, Suite 400, Sacramento, CA 95833, [www.bppe.ca.gov](http://www.bppe.ca.gov), toll-free telephone number (888) 370-7589 or by fax (916) 263-1897.

\_\_\_\_\_  
Student Name-Print

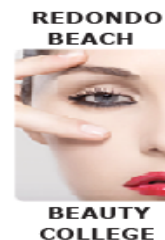
\_\_\_\_\_  
Student Signature

\_\_\_\_\_  
School Official

\_\_\_\_\_  
Date

\_\_\_\_\_  
Date

**REDONDO BEACH BEAUTY COLLEGE**  
**2205 W. ARTESIA BOULEVARD**  
**REDONDO BEACH, CA 90278**  
**Phone: (310) 370-7464 Fax: (310) 370-8227**  
[www.rbbeautycollege.com](http://www.rbbeautycollege.com)



### Definitions

- “Number of Students Who Began the Program” means the number of students who began a program who were scheduled to complete the program within 100% of the published program length within the reporting calendar year and excludes all students who cancelled during the cancellation period.
- “Students Available for Graduation” is the number of students who began the program minus the number of students who have died, been incarcerated, or been called to active military duty.
- “Number of On-time Graduates” is the number of students who completed the program within 100% of the published program length within the reporting calendar year.
- “On-time Completion Rate” is the number of on-time graduates divided by the number of students available for graduation.
- “150% Graduates” is the number of students who completed the program within 150% of the program length (includes on-time graduates).
- “150% Completion Rate” is the number of students who completed the program in the reported calendar year within 150% of the published program length, including on-time graduates, divided by the number of students available for graduation.
- “Graduates Available for Employment” means the number of graduates minus the number of graduates unavailable for employment.
- “Graduates Unavailable for Employment” means the graduate who, after graduation, dies, become incarcerated, are called to active military duty, are international students that leave the United States or do not have a visa allowing employment in the United States, or are continuing their education in an accredited or bureau-approved postsecondary institution.
- “Graduates employed in the Field” means a graduate who beginning within six months after a student completes the applicable educational program are gainfully employed, whose employment has been reported, and for whom the institution has documented verification of employment. For occupations for which the state requires passing an examination, the six months period begins after the announcement of the examination results for the first examination available after a student completes an applicable educational program.
- “Placement Rate Employed in the Field” is calculated by dividing the number of graduates gainfully employed in the field by the number of graduates available for employment.
- “Number of Graduates Taking Exam” is the number of graduates who took the first available exam in the reported calendar year.
- “First Available Exam Date” is the date for the first available exam after a student completed a program.
- “Passage Rate” is calculated by dividing the number of graduates who passed the exam by the number of graduates who took the reported licensing exam.
- “Number Who Passed First Available Exam” is the number of graduates who took and passed the first available licensing exam after completing the program.
- “Salary” is as reported by graduate or graduate’s employer.
- “No Salary Information Reported” is the number of graduates for whom, after making reasonable attempts, the school was not able to obtain salary information.

**REDONDO BEACH BEAUTY COLLEGE**  
2205 W. ARTESIA BOULEVARD  
REDONDO BEACH, CA 90278  
Phone: (310) 370-7464 Fax: (310) 370-8227  
[www.rbbeautycollege.com](http://www.rbbeautycollege.com)



## **STUDENT'S RIGHT TO CANCEL**

**The student has the right to cancel** the enrollment agreement and obtain a full refund of charges paid, less a reasonable deposit or registration fee not to exceed one hundred fifty dollars (\$150), if notice of cancellation is made through attendance at the first class session (**first day of class to “first class day”, or the seven days after enrollment was signed**), whichever is later.

To obtain a refund, the student must provide a written notice to:

**Redondo Beach Beauty College**  
2205 W. Artesia Blvd  
Redondo Beach, CA 90278  
Phone (310)370-7464  
Fax (310)370-8227  
Email: [rbbeautycollege@yahoo.com](mailto:rbbeautycollege@yahoo.com)

If the institution gave the student any equipment, the student shall return the equipment within 30 days following the date of the Notice of Cancellation. If the student fails to return the equipment within this 30 day-period, the institution may retain that portion of the consideration paid by the student equal to the documented cost to the institution of the equipment and shall refund the portion of the consideration exceeding the documented cost to the institution of the equipment within 10 days after the period within which the student is required to return the equipment. The student may retain the equipment without further obligation to pay for it.

**Student's Initials:** \_\_\_\_\_ **Date:** \_\_\_\_\_

**Initial only after you have had sufficient time to read and understand the information.**

