

**REDONDO BEACH BEAUTY COLLEGE**

23800 Hawthorne Blvd # 200

Torrance, CA 90505

Phone: (310) 370-7464 Fax: (310) 370-8227

[www.rbbeautycollege.com](http://www.rbbeautycollege.com)



**SCHOOL PERFORMANCE FACT SHEET**

**Calendar Years 2019 & 2020**

Includes data for the two calendar years prior to reporting

**PROGRAM NAME: COSMETOLOGY      PROGRAM LENGTH:      1600 hours 50-80 Weeks**

**On-Time Completion Rates: (Graduation Rates)**

Calendar Year	Number of Students Who Began Program	Students Available for Graduation	Number of on-time Graduates	On-time Completion Rate
**2019	7	7	4	57%
**2020	6	6	1	16%

Student's Initials: \_\_\_\_\_ Date: \_\_\_\_\_

Initial only after you have had sufficient time to read and understand the information.

**150% TABLE OPTIONAL**

**Students Completing After within 150% of Published Program Length**

Calendar Year	Number of Students Who Began Program	Students Available for Graduation	150% Graduates	150% Completion Rate
**2019	7	7	3	43%
**2020	6	6	1	16%

\*\* Included if the program is more than one year in length.

Student's Initials: \_\_\_\_\_ Date: \_\_\_\_\_

Initial only after you have had sufficient time to read and understand the information.

**REDONDO BEACH BEAUTY COLLEGE**  
 23800 Hawthorne Blvd # 200  
 Torrance, CA 90505  
 Phone: (310) 370-7464 Fax: (310) 370-8227  
[www.rbbeautycollege.com](http://www.rbbeautycollege.com)



**Job Placement Rates (includes data for the two calendar years prior to reporting)**

Calendar Year	Number of Student Who Began Program	Number of Graduate	Graduates Available for Employment	Graduates Employed in the Field	Placement Rate Employed in the Field
**2019	7	7	7	2	19%
**2020	6	2	2	2	100%

You may obtain from the institution a list of the employment positions determined to be in the field for which a student received education and training. **Student can obtain this information from Director of Admissions by requesting the information in writing.**

**Gainful Employment Categories (includes data for the two calendar years prior to reporting)**

**Part Time vs. Full Time Employment**

Calendar Year	“Part-Time” Graduates Employed in the field 20 to 29 hours per week	“Full-Time” Graduates Employed in at least 30 hours per week	Total Graduates Employed in the Field
**2019	1	1	2
**2020	2	0	2

**Student's Initials:** \_\_\_\_\_ **Date:** \_\_\_\_\_

**Initial only after you have had sufficient time to read and understand the information.**

**REDONDO BEACH BEAUTY COLLEGE**

23800 Hawthorne Blvd # 200

Torrance, CA 90505

Phone: (310) 370-7464 Fax: (310) 370-8227

[www.rbbeautycollege.com](http://www.rbbeautycollege.com)



**Single Position vs. Concurrent Aggregated Positions**

Calendar Year	Graduates Employed in the field in the single position	Graduates Employed in the field in concurrent aggregated positions	Total Graduates Employed in the Field
**2019	1	0	2
**2020	2	0	2

**Self-Employed/Freelance Positions**

Calendar Year	Graduates Employed who are self-employed or working freelance	Total Graduates Employed in the Field
**2019	1	2
**2020	0	2

**Institutional Employment**

Calendar Year	Graduates Employed in the field who are employed by the institution, an employer owned by the institution, or an employer who shares ownership with the institution	Total Graduates Employed in the Field
**2019	0	2
**2020	0	2

**Student's Initials: \_\_\_\_\_ Date: \_\_\_\_\_**

**Initial only after you have had sufficient time to read and understand the information.**

**IF the majority of graduates from this program obtain jobs in self-employment or freelance work add:**

This program may result in freelance or self-employment.

- The work available to graduates of this program is usually for freelance or self-employment.
- This type of work may not be consistent.
- The period of employment can range from one day to weeks to several months.
- Hours worked in a day or week may be more or less than the traditional 8 hour work day or 40 hour work week.
- You can expect to spend unpaid time expanding your networks, advertising, promoting your services, or honing your skills.
- Once graduates begin to work freelance or are self-employed, they will be asked to provide documentation that they are employed as such so that they may be counted as placed for our job placement records.
- Students initialing this disclosure understand that either a majority or all of this school's graduates are employed in this manner and understand what comprises this work style.

**Student's Initials: \_\_\_\_\_ Date: \_\_\_\_\_**

**Only initial after you have had sufficient time to read and understand the information.**

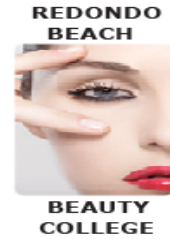
**REDONDO BEACH BEAUTY COLLEGE**

23800 Hawthorne Blvd # 200

Torrance, CA 90505

Phone: (310) 370-7464 Fax: (310) 370-8227

www.rbbeautycollege.com



**License Examination Passage Rates (includes data for the two calendar years prior to reporting)**

Calendar Year	Number of Graduates in Calendar Year	Number of Graduates Taking Exam	Number Who Passed First Available Exam	Number Who Failed First Available Exam	Passage Rate
**2019	7	2	2	0	100%
**2020	2	2	2	0	100%

Licensure examination passage data is not available from the state agency administering the examination. We are unable to collect data from graduates.

Student's Initials: \_\_\_\_\_ Date: \_\_\_\_\_

Initial only after you have had sufficient time to read and understand the information.

**Salary and Wage Information (includes data for the two calendar years prior to reporting)**

**Annual Salary and Wages Reported for Graduates Employed in the Field**

Calendar Year	Graduates Available for Employment	Graduates Employed in Field	\$5,000-\$10,000	\$10,001-\$15,000	\$25,001-\$30,000	\$30,001-\$35,001	No Salary Information Reported
**2019	7	2	1	0	0	0	1
**2020	2	2	0	2	0	0	0

A list of sources used to substantiate salary disclosures is available from the school. Student can obtain this information from Director of Admissions by requesting the information in writing.

Student's Initials: \_\_\_\_\_ Date: \_\_\_\_\_

Initial only after you have had sufficient time to read and understand the information.

**Cost of Educational Program**

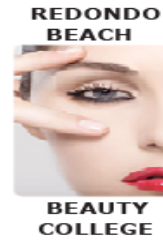
Total charges for the program for students completing on-time in 2019: **\$12,950.00** Additional charges may be incurred if the program is not completed on-time

Total charges for the program for students completing on-time in 2020: **\$12,950.00** Additional charges may be incurred if the program is not completed on-time.

Student's Initials: \_\_\_\_\_ Date: \_\_\_\_\_

Initial only after you have had sufficient time to read and understand the information.

**REDONDO BEACH BEAUTY COLLEGE**  
**23800 Hawthorne Blvd # 200**  
**Torrance, CA 90505**  
**Phone: (310) 370-7464 Fax: (310) 370-8227**  
[www.rbbeautycollege.com](http://www.rbbeautycollege.com)



**Federal Student Loan Debt**

Calendar Year	Most recent three-year cohort default rate, as reported by the United State Department of Education. 1	The percentage of enrolled students in 2019 and 2020 receiving federal student loans to pay for this program.	The percentage of graduates in 2019 and 2020 who took out federal student loans to pay for this program	The average amount of federal student loan debt of 2018 and 2019 graduates who took out federal student loans at this institution.
<b>2019</b>	0%	.14%	100%	\$2,547
<b>2020</b>	0%	16.6%	0%	\$1,059

The percentage of students who defaulted on their federal student loans is called the Cohort Default Rate (CDR). It shows the percentage of this school’s students who were more than 270 days (9 months) behind on their federal student loans within three years of when the first payment was due. This is the most recent CDR reported by the U.S. Department of Education.

**Student’s Initials: \_\_\_\_\_ Date: \_\_\_\_\_**

**Initial only after you have had sufficient time to read and understand the information.**

This fact sheet is filed with the Bureau for Private Postsecondary Education. Regardless of any information you may have relating to completion rates, placement rates, starting salaries, or license exam passage rates, this fact sheet contains the information as calculated pursuant to state law.

Any questions a student may have regarding this fact sheet that have not been satisfactorily answered by the institution may be directed to the Bureau for Private Postsecondary Education at 2535 Capitol Oaks Drive, Suite 400, Sacramento, CA 95833, [www.bppe.ca.gov](http://www.bppe.ca.gov), toll-free telephone number (888) 370-7589 or by fax (916) 263-1897.

\_\_\_\_\_  
 Student Name-Print

\_\_\_\_\_  
 Student Signature

\_\_\_\_\_  
 Date

\_\_\_\_\_  
 School Official

\_\_\_\_\_  
 Date

## **REDONDO BEACH BEAUTY COLLEGE**

**23800 Hawthorne Blvd # 200**

**Torrance, CA 90505**

**Phone: (310) 370-7464 Fax: (310) 370-8227**

[www.rbbeautycollege.com](http://www.rbbeautycollege.com)



### **Definitions**

- “Number of Students Who Began the Program” means the number of students who began a program who were scheduled to complete the program within 100% of the published program length within the reporting calendar year and excludes all students who cancelled during the cancellation period.
- “Students Available for Graduation” is the number of students who began the program minus the number of students who have died, been incarcerated, or been called to active military duty.
- “Number of On-time Graduates” is the number of students who completed the program within 100% of the published program length within the reporting calendar year.
- “On-time Completion Rate” is the number of on-time graduates divided by the number of students available for graduation.
- “150% Graduates” is the number of students who completed the program within 150% of the program length (includes on-time graduates).
- “150% Completion Rate” is the number of students who completed the program in the reported calendar year within 150% of the published program length, including on-time graduates, divided by the number of students available for graduation.
- “Graduates Available for Employment” means the number of graduates minus the number of graduates unavailable for employment.
- “Graduates Unavailable for Employment” means the graduate who, after graduation, dies, become incarcerated, are called to active military duty, are international students that leave the United States or do not have a visa allowing employment in the United States, or are continuing their education in an accredited or bureau-approved postsecondary institution.
- “Graduates employed in the Field” means a graduate who beginning within six months after a student completes the applicable educational program are gainfully employed, whose employment has been reported, and for whom the institution has documented verification of employment. For occupations for which the state requires passing an examination, the six months period begins after the announcement of the examination results for the first examination available after a student completes an applicable educational program.
- “Placement Rate Employed in the Field” is calculated by dividing the number of graduates gainfully employed in the field by the number of graduates available for employment.
- “Number of Graduates Taking Exam” is the number of graduates who took the first available exam in the reported calendar year.
- “First Available Exam Date” is the date for the first available exam after a student completed a program.
- “Passage Rate” is calculated by dividing the number of graduates who passed the exam by the number of graduates who took the reported licensing exam.
- “Number Who Passed First Available Exam” is the number of graduates who took and passed the first available licensing exam after completing the program.
- “Salary” is as reported by graduate or graduate’s employer.
- “No Salary Information Reported” is the number of graduates for whom, after making reasonable attempts, the school was not able to obtain salary information.

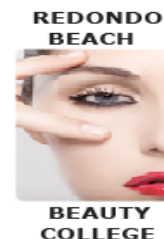
**REDONDO BEACH BEAUTY COLLEGE**

**23800 Hawthorne Blvd # 200**

**Torrance, CA 90505**

**Phone: (310) 370-7464 Fax: (310) 370-8227**

[www.rbbeautycollege.com](http://www.rbbeautycollege.com)



**STUDENT'S RIGHT TO CANCEL**

**The student has the right to cancel** the enrollment agreement and obtain a full refund of charges paid, less a reasonable deposit or registration fee not to exceed one hundred fifty dollars (\$150), if notice of cancellation is made through attendance at the first class session (**first day of class to “first class day”, or the seven days after enrollment was signed**), whichever is later.

To obtain a refund, the student must provide a written notice to:

**Redondo Beach Beauty College**

**23800 Hawthorne Blvd # 200**

**Torrance, CA 90505**

**Phone (310)370-7464**

**Fax (310)370-8227**

**Email: [rbbeautycollege@yahoo.com](mailto:rbbeautycollege@yahoo.com)**

If the institution gave the student any equipment, the student shall return the equipment within 30 days following the date of the Notice of Cancellation. If the student fails to return the equipment within this 30 day-period, the institution may retain that portion of the consideration paid by the student equal to the documented cost to the institution of the equipment and shall refund the portion of the consideration exceeding the documented cost to the institution of the equipment within 10 days after the period within which the student is required to return the equipment. The student may retain the equipment without further obligation to pay for it.

**Student's Initials: \_\_\_\_\_ Date: \_\_\_\_\_**

**Initial only after you have had sufficient time to read and understand the information.**

**REDONDO BEACH BEAUTY COLLEGE**

23800 Hawthorne Blvd # 200

Torrance, CA 90505

Phone: (310) 370-7464 Fax: (310) 370-8227

[www.rbbeautycollege.com](http://www.rbbeautycollege.com)



**SCHOOL PERFORMANCE FACT SHEET**

**Calendar Years 2019 & 2020**

**PROGRAM NAME: ADVANCED MANICURING      PROGRAM LENGTH: 600 hours 10-20 Weeks**

**On-Time Completion Rates: (Graduation Rates)**

Calendar Year	Number of Students Who Began Program	Students Available for Graduation	Number of on-time Graduates	On-time Completion Rate
**2019	25	25	24	96%
**2020	6	6	6	100%

Student's Initials: \_\_\_\_\_ Date: \_\_\_\_\_

Initial only after you have had sufficient time to read and understand the information.

150% TABLE OPTIONAL (Program less than one year)

**Students Completing After Published Program Length - 150% completion Rate (101-150%)**

Calendar Year	Number of Students Who Began Program	Students Available for Graduation	150% Graduates	150% Completion Rate
**2019	25	24	0	0%
**2020	6	6	0	0%

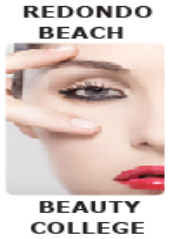
\*\* Included if the program is more than one year in length.

Student's Initials: \_\_\_\_\_ Date: \_\_\_\_\_

Initial only after you have had sufficient time to read and understand the information.



**REDONDO BEACH BEAUTY COLLEGE**  
 23800 Hawthorne Blvd # 200  
 Torrance, CA 90505  
 Phone: (310) 370-7464 Fax: (310) 370-8227  
[www.rbbeautycollege.com](http://www.rbbeautycollege.com)



**Job Placement Rates (includes data for the two calendar years prior to reporting)**

Calendar Year	Number of Student Who Began Program	Number of Graduate	Graduates Available for Employment	Graduates Employed in the Field	Placement Rate Employed in the Field
**2019	25	24	24	18	75%
**2020	6	6	6	5	83%

You may obtain from the institution a list of the employment positions determined to be in the field for which a student received education and training. **Student can obtain this information from Director of Admissions by requesting the information in writing.**

**Gainful Employment Categories (includes data for the two calendar years prior to reporting)**

**Part Time vs. Full Time Employment**

Calendar Year	“Part-Time” Graduates Employed in the field 20 to 29 hours per week	“Full-Time” Graduates Employed in at least 30 hours per week	Total Graduates Employed in the Field
**2019	14	4	18
**2020	5	0	5

**Student's Initials: \_\_\_\_\_ Date: \_\_\_\_\_**

**Initial only after you have had sufficient time to read and understand the information.**

**REDONDO BEACH BEAUTY COLLEGE**

23800 Hawthorne Blvd # 200

Torrance, CA 90505

Phone: (310) 370-7464 Fax: (310) 370-8227

[www.rbbeautycollege.com](http://www.rbbeautycollege.com)



**Single Position vs. Concurrent Aggregated Positions**

Calendar Year	Graduates Employed in the field in the single position	Graduates Employed in the field in concurrent aggregated positions	Total Graduates Employed in the Field
**2019	17	0	18
**2020	5	0	5

**Self-Employed/Freelance Positions**

Calendar Year	Graduates Employed who are self-employed or working freelance	Total Graduates Employed in the Field
**2019	1	18
**2020	0	5

**Institutional Employment**

Calendar Year	Graduates Employed in the field who are employed by the institution, an employer owned by the institution, or an employer who shares ownership with the institution	Total Graduates Employed in the Field
**2019	0	18
**2020	0	5

**Student's Initials: \_\_\_\_\_ Date: \_\_\_\_\_**

**Initial only after you have had sufficient time to read and understand the information.**

**IF the majority of graduates from this program obtain jobs in self-employment or freelance work add:**

This program may result in freelance or self-employment.

- The work available to graduates of this program is usually for freelance or self-employment.
- This type of work may not be consistent.
- The period of employment can range from one day to weeks to several months.
- Hours worked in a day or week may be more or less than the traditional 8 hour work day or 40 hour work week.
- You can expect to spend unpaid time expanding your networks, advertising, promoting your services, or honing your skills.
- Once graduates begin to work freelance or are self-employed, they will be asked to provide documentation that they are employed as such so that they may be counted as placed for our job placement records.
- Students initialing this disclosure understand that either a majority or all of this school's graduates are employed in this manner and understand what comprises this work style.

**Student's Initials: \_\_\_\_\_ Date: \_\_\_\_\_**

**Only initial after you have had sufficient time to read and understand the information.**

**REDONDO BEACH BEAUTY COLLEGE**

23800 Hawthorne Blvd # 200

Torrance, CA 90505

Phone: (310) 370-7464 Fax: (310) 370-8227

[www.rbbeautycollege.com](http://www.rbbeautycollege.com)



**License Examination Passage Rates (includes data for the two calendar years prior to reporting)**

Calendar Year	Number of Graduates in Calendar Year	Number of Graduates Taking Exam	Number Who Passed First Available Exam	Number Who Failed First Available Exam	Passage Rate
**2019	24	22	12	10	55%
**2020	6	5	4	1	80%

Licensure examination passage data is not available from the state agency administering the examination. We are unable to collect data from graduates.

**Student's Initials: \_\_\_\_\_ Date: \_\_\_\_\_**

**Initial only after you have had sufficient time to read and understand the information.**

**Salary and Wage Information (includes data for the two calendar years prior to reporting)**

**Annual Salary and Wages Reported for Graduates Employed in the Field**

Calendar Year	Graduates Available for Employment	Graduates Employed in Field	\$10,000-\$15,000	\$15,001-\$20,000	\$20,001-\$25,000	\$25,001-\$30,001	No Salary Information Reported
**2019	24	18	14	0	0	0	4
**2020	6	5	5	0	0	0	0

A list of sources used to substantiate salary disclosures is available from the school. **Student can obtain this information from Director of Admissions by requesting the information in writing.**

**Student's Initials: \_\_\_\_\_ Date: \_\_\_\_\_**

**Initial only after you have had sufficient time to read and understand the information.**

**Cost of Educational Program**

Total charges for the program for students completing on-time **in 2019: \$4,200.00** Additional charges may be incurred if the program is not completed on-time.

Total charges for the program for students completing on-time **in 2020: \$4,200.00** Additional charges may be incurred if the program is not completed on-time.

**Student's Initials: \_\_\_\_\_ Date: \_\_\_\_\_**

**Initial only after you have had sufficient time to read and understand the information.**

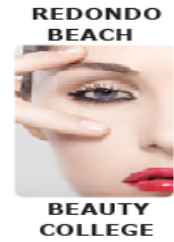
**REDONDO BEACH BEAUTY COLLEGE**

**23800 Hawthorne Blvd # 200**

**Torrance, CA 90505**

**Phone: (310) 370-7464 Fax: (310) 370-8227**

[www.rbbeautycollege.com](http://www.rbbeautycollege.com)



**Federal Student Loan Debt**

Calendar Year	Most recent three-year cohort default rate, as reported by the United State Department of Education. 1	The percentage of enrolled students in 2018 and 2019 receiving federal student loans to pay for this program.	The percentage of graduates in 2018 and 2019 who took out federal student loans to pay for this program	The average amount of federal student loan debt of 2018 and 2019 graduates who took out federal student loans at this institution.
2019	0	0	0	0
2020	0	0	0	0

The percentage of students who defaulted on their federal student loans is called the Cohort Default Rate (CDR). It shows the percentage of this school’s students who were more than 270 days (9 months) behind on their federal student loans within three years of when the first payment was due. This is the most recent CDR reported by the U.S. Department of Education.

**Student’s Initials:** \_\_\_\_\_ **Date:** \_\_\_\_\_

**Initial only after you have had sufficient time to read and understand the information.**

This fact sheet is filed with the Bureau for Private Postsecondary Education. Regardless of any information you may have relating to completion rates, placement rates, starting salaries, or license exam passage rates, this fact sheet contains the information as calculated pursuant to state law.

Any questions a student may have regarding this fact sheet that have not been satisfactorily answered by the institution may be directed to the Bureau for Private Postsecondary Education at 2535 Capitol Oaks Drive, Suite 400, Sacramento, CA 95833, [www.bppe.ca.gov](http://www.bppe.ca.gov), toll-free telephone number (888) 370-7589 or by fax (916) 263-1897.

\_\_\_\_\_  
Student Name-Print

\_\_\_\_\_  
Student Signature

\_\_\_\_\_  
Date

\_\_\_\_\_  
School Official

\_\_\_\_\_  
Date

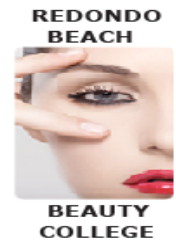
## **REDONDO BEACH BEAUTY COLLEGE**

**23800 Hawthorne Blvd # 200**

**Torrance, CA 90505**

**Phone: (310) 370-7464 Fax: (310) 370-8227**

[www.rbbeautycollege.com](http://www.rbbeautycollege.com)



### **Definitions**

- “Number of Students Who Began the Program” means the number of students who began a program who were scheduled to complete the program within 100% of the published program length within the reporting calendar year and excludes all students who cancelled during the cancellation period.
- “Students Available for Graduation” is the number of students who began the program minus the number of students who have died, been incarcerated, or been called to active military duty.
- “Number of On-time Graduates” is the number of students who completed the program within 100% of the published program length within the reporting calendar year.
- “On-time Completion Rate” is the number of on-time graduates divided by the number of students available for graduation.
- “150% Graduates” is the number of students who completed the program within 150% of the program length (includes on-time graduates).
- “150% Completion Rate” is the number of students who completed the program in the reported calendar year within 150% of the published program length, including on-time graduates, divided by the number of students available for graduation.
- “Graduates Available for Employment” means the number of graduates minus the number of graduates unavailable for employment.
- “Graduates Unavailable for Employment” means the graduate who, after graduation, dies, become incarcerated, are called to active military duty, are international students that leave the United States or do not have a visa allowing employment in the United States, or are continuing their education in an accredited or bureau-approved postsecondary institution.
- “Graduates employed in the Field” means a graduate who beginning within six months after a student completes the applicable educational program are gainfully employed, whose employment has been reported, and for whom the institution has documented verification of employment. For occupations for which the state requires passing an examination, the six months period begins after the announcement of the examination results for the first examination available after a student completes an applicable educational program.
- “Placement Rate Employed in the Field” is calculated by dividing the number of graduates gainfully employed in the field by the number of graduates available for employment.
- “Number of Graduates Taking Exam” is the number of graduates who took the first available exam in the reported calendar year.
- “First Available Exam Date” is the date for the first available exam after a student completed a program.
- “Passage Rate” is calculated by dividing the number of graduates who passed the exam by the number of graduates who took the reported licensing exam.
- “Number Who Passed First Available Exam” is the number of graduates who took and passed the first available licensing exam after completing the program.
- “Salary” is as reported by graduate or graduate’s employer.
- “No Salary Information Reported” is the number of graduates for whom, after making reasonable attempts, the school was not able to obtain salary information.

**REDONDO BEACH BEAUTY COLLEGE**

**23800 Hawthorne Blvd # 200**

**Torrance, CA 90505**

**Phone: (310) 370-7464 Fax: (310) 370-8227**

[www.rbbeautycollege.com](http://www.rbbeautycollege.com)



**STUDENT'S RIGHT TO CANCEL**

**The student has the right to cancel** the enrollment agreement and obtain a full refund of charges paid, less a reasonable deposit or registration fee not to exceed one hundred fifty dollars (\$150), if notice of cancellation is made through attendance at the first class session (**first day of class to “first class day”, or the seven days after enrollment was signed**), whichever is later.

To obtain a refund, the student must provide a written notice to:

**Redondo Beach Beauty College**

**23800 Hawthorne Blvd # 200**

**Torrance, CA 90505**

**Phone (310)370-7464**

**Fax (310)370-8227**

**Email: [rbbeautycollege@yahoo.com](mailto:rbbeautycollege@yahoo.com)**

If the institution gave the student any equipment, the student shall return the equipments within 30 days following the date of the Notice of Cancellation. If the student fails to return the equipment within this 30 day-period, the institution may retain that portion of the consideration paid by the student equal to the documented cost to the institution of the equipment and shall refund the portion of the consideration exceeding the documented cost to the institution of the equipment within 10 days after the period within which the student is required to return the equipment. The student may retain the equipment without further obligation to pay for it.

**Student's Initials: \_\_\_\_\_ Date: \_\_\_\_\_**

**Initial only after you have had sufficient time to read and understand the information**

**REDONDO BEACH BEAUTY COLLEGE**

23800 Hawthorne Blvd # 200

Torrance, CA 90505

Phone: (310) 370-7464 Fax: (310) 370-8227

[www.rbbeautycollege.com](http://www.rbbeautycollege.com)



**SCHOOL PERFORMANCE FACT SHEET**

**Calendar Years 2019 & 2020**

**PROGRAM NAME: BARBERING      PROGRAM LENGTH      1500 hours 47-75 Weeks**

**On-Time Completion Rates: (Graduation Rates)**

Includes data for the two calendar years prior to reporting

Calendar Year	Number of Students Who Began Program	Students Available for Graduation	Number of on-time Graduates	On-time Completion Rate
**2019	0	0	0	0
**2020	0	0	0	0

Student's Initials: \_\_\_\_\_ Date: \_\_\_\_\_

Initial only after you have had sufficient time to read and understand the information.

**150% TABLE OPTIONAL (Program less than one year)**

**Students Completing After within 150% of Published Program Length**

Calendar Year	Number of Students Who Began Program	Students Available for Graduation	150% Graduates	150% Completion Rate
**2019	0	0	0	0
**2020	0	0	0	0

\*\* Included if the program is more than one year in length.

Student's Initials: \_\_\_\_\_ Date: \_\_\_\_\_

Initial only after you have had sufficient time to read and understand the information.

**REDONDO BEACH BEAUTY COLLEGE**

23800 Hawthorne Blvd # 200

Torrance, CA 90505

Phone: (310) 370-7464 Fax: (310) 370-8227

[www.rbbeautycollege.com](http://www.rbbeautycollege.com)



**Job Placement Rates (includes data for the two calendar years prior to reporting)**

Calendar Year	Number of Student Who Began Program	Number of Graduate	Graduates Available for Employment	Graduates Employed in the Field	Placement Rate Employed in the Field
**2019	0	0	0	0	0
**2020	0	0	0	0	0

You may obtain from the institution a list of the employment positions determined to be in the field for which a student received education and training. **Student can obtain this information from Director of Admissions by requesting the information in writing.**

**Gainful Employment Categories (includes data for the two calendar years prior to reporting)**

**Part Time vs. Full Time Employment**

Calendar Year	"Part-Time" Graduates Employed in the field 20 to 29 hours per week	"Full-Time" Graduates Employed in at least 30 hours per week	Total Graduates Employed in the Field
**2019	0	0	0
**2020	0	0	0

**Student's Initials:** \_\_\_\_\_ **Date:** \_\_\_\_\_

**Initial only after you have had sufficient time to read and understand the information.**



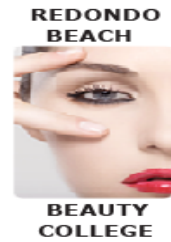
**REDONDO BEACH BEAUTY COLLEGE**

23800 Hawthorne Blvd # 200

Torrance, CA 90505

Phone: (310) 370-7464 Fax: (310) 370-8227

[www.rbbeautycollege.com](http://www.rbbeautycollege.com)



**Single Position vs. Concurrent Aggregated Positions**

Calendar Year	Graduates Employed in the field in the single position	Graduates Employed in the field in concurrent aggregated positions	Total Graduates Employed in the Field
**2019	0	0	0
**2020	0	0	0

**Self-Employed/Freelance Positions**

Calendar Year	Graduates Employed who are self-employed or working freelance	Total Graduates Employed in the Field
**2019	0	0
**2020	0	0

**Institutional Employment**

Calendar Year	Graduates Employed in the field who are employed by the institution, an employer owned by the institution, or an employer who shares ownership with the institution	Total Graduates Employed in the Field
**2019	0	0
**2020	0	0

**Student's Initials: \_\_\_\_\_ Date: \_\_\_\_\_**

**Initial only after you have had sufficient time to read and understand the information.**

**IF the majority of graduates from this program obtain jobs in self-employment or freelance work add:**

This program may result in freelance or self-employment.

- The work available to graduates of this program is usually for freelance or self-employment.
- This type of work may not be consistent.
- The period of employment can range from one day to weeks to several months.
- Hours worked in a day or week may be more or less than the traditional 8 hour work day or 40 hour work week.
- You can expect to spend unpaid time expanding your networks, advertising, promoting your services, or honing your skills.
- Once graduates begin to work freelance or are self-employed, they will be asked to provide documentation that they are employed as such so that they may be counted as placed for our job placement records.
- Students initialing this disclosure understand that either a majority or all of this school's graduates are employed in this manner and understand what comprises this work style.

**Student's Initials: \_\_\_\_\_ Date: \_\_\_\_\_**

**Only initial after you have had sufficient time to read and understand the information.**

**REDONDO BEACH BEAUTY COLLEGE**

23800 Hawthorne Blvd # 200

Torrance, CA 90505

Phone: (310) 370-7464 Fax: (310) 370-8227

[www.rbbeautycollege.com](http://www.rbbeautycollege.com)



**License Examination Passage Rates (includes data for the two calendar years prior to reporting)**

Calendar Year	Number of Graduates in Calendar Year	Number of Graduates Taking Exam	Number Who Passed First Available Exam	Number Who Failed First Available Exam	Passage Rate
**2019	0	0	0	0	0
**2020	0	0	0	0	0

Licensure examination passage data is not available from the state agency administering the examination. We are unable to collect data from graduates.

Student's Initials: \_\_\_\_\_ Date: \_\_\_\_\_

Initial only after you have had sufficient time to read and understand the information.

**Salary and Wage Information (includes data for the two calendar years prior to reporting)**

**Annual Salary and Wages Reported for Graduates Employed in the Field**

Calendar Year	Graduates Available for Employment	Graduates Employed in Field	\$15,000-\$20,000	\$20,001-\$25,000	\$25,001-30,000	\$30,001-\$35,001	No Salary Information Reported
**2019	0	0	0	0	0	0	0
**2020	0	0	0	0	0	0	0

A list of sources used to substantiate salary disclosures is available from the school. **Student can obtain this information from Director of Admissions by requesting the information in writing.**

Student's Initials: \_\_\_\_\_ Date: \_\_\_\_\_

Initial only after you have had sufficient time to read and understand the information.

**Cost of Educational Program**

Total charges for the program for students completing on-time in 2018: **\$11,850.00** Additional charges may be incurred if the program is not completed on-time.

Total charges for the program for students completing on-time in 2019: **\$11,850.00** Additional charges may be incurred if the program is not completed on-time.

Student's Initials: \_\_\_\_\_ Date: \_\_\_\_\_

Initial only after you have had sufficient time to read and understand the information.

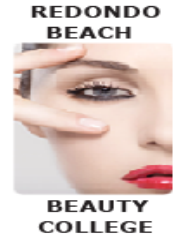
**REDONDO BEACH BEAUTY COLLEGE**

**2205 W. ARTESIA BOULEVARD**

**REDONDO BEACH, CA 90278**

**Phone: (310) 370-7464 Fax: (310) 370-8227**

[www.rbbeautycollege.com](http://www.rbbeautycollege.com)



**Federal Student Loan Debt**

Calendar Year	Most recent three year cohort default rate, as reported by the United State Department of Education. 1	The percentage of enrolled students in 2018 and 2019 receiving federal student loans to pay for this program.	The percentage of graduates in 2018 and 2019 who took out federal student loans to pay for this program	The average amount of federal student loan debt of 2018 and 2019 graduates who took out federal student loans at this institution.
2019	0	0	0	0
2020	0	0	0	0

The percentage of students who defaulted on their federal student loans is called the Cohort Default Rate (CDR). It shows the percentage of this school’s students who were more than 270 days (9 months) behind on their federal student loans within three years of when the first payment was due. This is the most recent CDR reported by the U.S. Department of Education.

**Student’s Initials: \_\_\_\_\_ Date: \_\_\_\_\_**

**Initial only after you have had sufficient time to read and understand the information.**

This fact sheet is filed with the Bureau for Private Postsecondary Education. Regardless of any information you may have relating to completion rates, placement rates, starting salaries, or license exam passage rates, this fact sheet contains the information as calculated pursuant to state law.

Any questions a student may have regarding this fact sheet that have not been satisfactorily answered by the institution may be directed to the Bureau for Private Postsecondary Education at 2535 Capitol Oaks Drive, Suite 400, Sacramento, CA 95833, [www.bppe.ca.gov](http://www.bppe.ca.gov), toll-free telephone number (888) 370-7589 or by fax (916) 263-1897.

\_\_\_\_\_  
Student Name-Print

\_\_\_\_\_  
Student Signature

\_\_\_\_\_  
Date

\_\_\_\_\_  
School Official

\_\_\_\_\_  
Date

## **REDONDO BEACH BEAUTY COLLEGE**

**23800 Hawthorne Blvd # 200**

**Torrance, CA 90505**

**Phone: (310) 370-7464 Fax: (310) 370-8227**

[www.rbbeautycollege.com](http://www.rbbeautycollege.com)



### **Definitions**

- Number of Students Who Began the Program” means the number of students who began a program who were scheduled to complete the program within 100% of the published program length within the reporting calendar year and excludes all students who cancelled during the cancellation period.
- “Students Available for Graduation” is the number of students who began the program minus the number of students who have died, been incarcerated, or been called to active military duty.
- “Number of On-time Graduates” is the number of students who completed the program within 100% of the published program length within the reporting calendar year.
- “On-time Completion Rate” is the number of on-time graduates divided by the number of students available for graduation.
- “150% Graduates” is the number of students who completed the program within 150% of the program length (includes on-time graduates).
- “150% Completion Rate” is the number of students who completed the program in the reported calendar year within 150% of the published program length, including on-time graduates, divided by the number of students available for graduation.
- “Graduates Available for Employment” means the number of graduates minus the number of graduates unavailable for employment.
- “Graduates Unavailable for Employment” means the graduate who, after graduation, dies, become incarcerated, are called to active military duty, are international students that leave the United States or do not have a visa allowing employment in the United States, or are continuing their education in an accredited or bureau-approved postsecondary institution.
- “Graduates employed in the Field” means a graduate who beginning within six months after a student completes the applicable educational program are gainfully employed, whose employment has been reported, and for whom the institution has documented verification of employment. For occupations for which the state requires passing an examination, the six months period begins after the announcement of the examination results for the first examination available after a student completes an applicable educational program.
- “Placement Rate Employed in the Field” is calculated by dividing the number of graduates gainfully employed in the field by the number of graduates available for employment.
- “Number of Graduates Taking Exam” is the number of graduates who took the first available exam in the reported calendar year.
- “First Available Exam Date” is the date for the first available exam after a student completed a program.
- “Passage Rate” is calculated by dividing the number of graduates who passed the exam by the number of graduates who took the reported licensing exam.
- “Number Who Passed First Available Exam” is the number of graduates who took and passed the first available licensing exam after completing the program.
- “Salary” is as reported by graduate or graduate’s employer.
- “No Salary Information Reported” is the number of graduates for whom, after making reasonable attempts, the school was not able to obtain salary information.

**REDONDO BEACH BEAUTY COLLEGE**

**23800 Hawthorne Blvd # 200**

**Torrance, CA 90505**

**Phone: (310) 370-7464 Fax: (310) 370-8227**

[www.rbbeautycollege.com](http://www.rbbeautycollege.com)



**STUDENT'S RIGHT TO CANCEL**

**The student has the right to cancel** the enrollment agreement and obtain a full refund of charges paid, less a reasonable deposit or registration fee not to exceed one hundred fifty dollars (\$150), if notice of cancellation is made through attendance at the first class session (**first day of class to “first class day”, or the seven days after enrollment was signed**), whichever is later.

To obtain a refund, the student must provide a written notice to:

**Redondo Beach Beauty College**

**23800 Hawthorne Blvd # 200**

**Torrance, CA 90505**

**Phone (310)370-7464**

**Fax (310)370-8227**

**Email: [rbbeautycollege@yahoo.com](mailto:rbbeautycollege@yahoo.com)**

If the institution gave the student any equipment, the student shall return the equipment within 30 days following the date of the Notice of Cancellation. If the student fails to return the equipment within this 30 day-period, the institution may retain that portion of the consideration paid by the student equal to the documented cost to the institution of the equipment and shall refund the portion of the consideration exceeding the documented cost to the institution of the equipment within 10 days after the period within which the student is required to return the equipment. The student may retain the equipment without further obligation to pay for it.

**Student's Initials: \_\_\_\_\_ Date: \_\_\_\_\_**

**Initial only after you have had sufficient time to read and understand the information.**

**REDONDO BEACH BEAUTY COLLEGE**

23800 Hawthorne Blvd # 200

Torrance, CA 90505

Phone: (310) 370-7464 Fax: (310) 370-8227

[www.rbbeautycollege.com](http://www.rbbeautycollege.com)



**SCHOOL PERFORMANCE FACT SHEET**

**Calendar Years 2019 & 2020**

Includes data for the two calendar years prior to reporting

**PROGRAM NAME: MANICURING PROGRAM LENGTH: 400 hours 10-20 Weeks**

**On-Time Completion Rates: (Graduation Rates)**

Calendar Year	Number of Students Who Began Program	Students Available for Graduation	Number of on-time Graduates	On-time Completion Rate
**2019	67	67	64	95.52%
**2020	26	26	23	88%

Student's Initials: \_\_\_\_\_ Date: \_\_\_\_\_

Initial only after you have had sufficient time to read and understand the information.

**150% TABLE OPTIONAL (Program less than one year)**

**Students Completing After within 150% of Published Program Length**

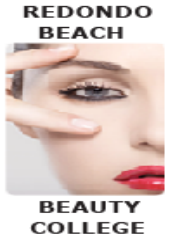
Calendar Year	Number of Students Who Began Program after within 150%	Students Available for Graduation	150% Graduates	150% Completion Rate
**2019	67	67	0	0%
**2020	26	26	0	0%

\*\* Included if the program is more than one year in length.

Student's Initials: \_\_\_\_\_ Date: \_\_\_\_\_

Initial only after you have had sufficient time to read and understand the information.

**REDONDO BEACH BEAUTY COLLEGE**  
 23800 Hawthorne Blvd # 200  
 Torrance, CA 90505  
 Phone: (310) 370-7464 Fax: (310) 370-8227  
[www.rbbeautycollege.com](http://www.rbbeautycollege.com)



**Job Placement Rates (includes data for the two calendar years prior to reporting)**

Calendar Year	Number of Student Who Began Program	Number of Graduate	Graduates Available for Employment	Graduates Employed in the Field	Placement Rate Employed in the Field
**2019	67	64	64	41	64%
**2020	26	23	23	13	56%

You may obtain from the institution a list of the employment positions determined to be in the field for which a student received education and training. **Student can obtain this information from Director of Admissions by requesting the information in writing.**

**Gainful Employment Categories (includes data for the two calendar years prior to reporting)**

**Part Time vs. Full Time Employment**

Calendar Year	“Part-Time” Graduates Employed in the field 20 to 29 hours per week	“Full-Time” Graduates Employed in at least 30 hours per week	Total Graduates Employed in the Field
**2019	14	27	41
**2020	13	0	13

**Student's Initials: \_\_\_\_\_ Date: \_\_\_\_\_**  
**Initial only after you have had sufficient time to read and understand the information.**

**REDONDO BEACH BEAUTY COLLEGE**

23800 Hawthorne Blvd # 200

Torrance, CA 90505

Phone: (310) 370-7464 Fax: (310) 370-8227

[www.rbbeautycollege.com](http://www.rbbeautycollege.com)**Single Position vs. Concurrent Aggregated Positions**

Calendar Year	Graduates Employed in the field in the single position	Graduates Employed in the field in concurrent aggregated positions	Total Graduates Employed in the Field
**2019	40	0	41
**2020	13	0	13

**Self-Employed/Freelance Positions**

Calendar Year	Graduates Employed who are self-employed or working freelance	Total Graduates Employed in the Field
**2019	1	41
**2020	0	13

**Institutional Employment**

Calendar Year	Graduates Employed in the field who are employed by the institution, an employer owned by the institution, or an employer who shares ownership with the institution	Total Graduates Employed in the Field
**2019	0	41
**2020	0	13

Student's Initials: \_\_\_\_\_ Date: \_\_\_\_\_

**Initial only after you have had sufficient time to read and understand the information.****IF the majority of graduates from this program obtain jobs in self-employment or freelance work add:**

This program may result in freelance or self-employment.

- the work available to graduates of this program is usually for freelance or self-employment.
- This type of work may not be consistent.
- The period of employment can range from one day to weeks to several months.
- Hours worked in a day or week may be more or less than the traditional 8 hour work day or 40 hour work week.
- You can expect to spend unpaid time expanding your networks, advertising, promoting your services, or honing your skills.
- Once graduates begin to work freelance or are self-employed, they will be asked to provide documentation that they are employed as such so that they may be counted as placed for our job placement records.
- Students initialing this disclosure understand that either a majority or all of this school's graduates are employed in this manner and understand what comprises this work style.

Student's Initials: \_\_\_\_\_ Date: \_\_\_\_\_

**Only initial after you have had sufficient time to read and understand the information.**



**REDONDO BEACH BEAUTY COLLEGE**

23800 Hawthorne Blvd # 200

Torrance, CA 90505

Phone: (310) 370-7464 Fax: (310) 370-8227

[www.rbbeautycollege.com](http://www.rbbeautycollege.com)



**License Examination Passage Rates (includes data for the two calendar years prior to reporting)**

Calendar Year	Number of Graduates in Calendar Year	Number of Graduates Taking Exam	Number Who Passed First Available Exam	Number Who Failed First Available Exam	Passage Rate
**2019	64	62	39	23	63%
**2020	23	22	9	13	40%

Licensure examination passage data is not available from the state agency administering the examination. We are unable to collect data from graduates.

Student's Initials: \_\_\_\_\_ Date: \_\_\_\_\_

Initial only after you have had sufficient time to read and understand the information.

**Salary and Wage Information (includes data for the two calendar years prior to reporting)**

**Annual Salary and Wages Reported for Graduates Employed in the Field**

Calendar Year	Graduates Available for Employment	Graduates Employed in Field	\$5,000-\$10,000	\$10,001-\$15,000	\$25,001-\$30,000	\$30,001-\$35,001	No Salary Info Reported
**2019	64	41	25	0	0	0	16
**2020	23	13	0	9	0	0	4

A list of sources used to substantiate salary disclosures is available from the school. Student can obtain this information from Director of Admissions by requesting the information in writing.

Student's Initials: \_\_\_\_\_ Date: \_\_\_\_\_

Initial only after you have had sufficient time to read and understand the information.

**Cost of Educational Program**

Total charges for the program for students completing on-time **in 2019: \$1,500.00** Additional charges may be incurred if the program is not completed on-time.

Total charges for the program for students completing on-time **in 2020: \$1,500.00** Additional charges may be incurred if the program is not completed on-time.

Student's Initials: \_\_\_\_\_ Date: \_\_\_\_\_

Initial only after you have had sufficient time to read and understand the information.

**REDONDO BEACH BEAUTY COLLEGE**

**23800 Hawthorne Blvd # 200**

**Torrance, CA 90505**

**Phone: (310) 370-7464 Fax: (310) 370-8227**

[www.rbbeautycollege.com](http://www.rbbeautycollege.com)



**Federal Student Loan Debt**

Calendar Year	Most recent three-year cohort default rate, as reported by the United State Department of Education. 1	The percentage of enrolled students in 2019 and 2020 receiving federal student loans to pay for this program.	The percentage of graduates in 2019 and 2020 who took out federal student loans to pay for this program	The average amount of federal student loan debt of 2019 and 2020 graduates who took out federal student loans at this institution.
2019	0	0	0	0
2020	0	0	0	0

The percentage of students who defaulted on their federal student loans is called the Cohort Default Rate (CDR). It shows the percentage of this school’s students who were more than 270 days (9 months) behind on their federal student loans within three years of when the first payment was due. This is the most recent CDR reported by the U.S. Department of Education.

**Student’s Initials: \_\_\_\_\_ Date: \_\_\_\_\_**

**Initial only after you have had sufficient time to read and understand the information.**

This fact sheet is filed with the Bureau for Private Postsecondary Education. Regardless of any information you may have relating to completion rates, placement rates, starting salaries, or license exam passage rates, this fact sheet contains the information as calculated pursuant to state law.

Any questions a student may have regarding this fact sheet that have not been satisfactorily answered by the institution may be directed to the Bureau for Private Postsecondary Education at 2535 Capitol Oaks Drive, Suite 400, Sacramento, CA 95833, [www.bppe.ca.gov](http://www.bppe.ca.gov), toll-free telephone number (888) 370-7589 or by fax (916) 263-1897.

\_\_\_\_\_  
Student Name-Print

\_\_\_\_\_  
Student Signature

\_\_\_\_\_  
Date

\_\_\_\_\_  
School Official

\_\_\_\_\_  
Date

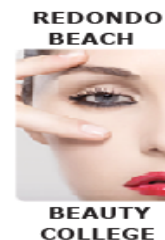
## **REDONDO BEACH BEAUTY COLLEGE**

**23800 Hawthorne Blvd # 200**

**Torrance, CA 90505**

**Phone: (310) 370-7464 Fax: (310) 370-8227**

[www.rbbeautycollege.com](http://www.rbbeautycollege.com)



### **Definitions**

- Number of Students Who Began the Program” means the number of students who began a program who were scheduled to complete the program within 100% of the published program length within the reporting calendar year and excludes all students who cancelled during the cancellation period.
- “Students Available for Graduation” is the number of students who began the program minus the number of students who have died, been incarcerated, or been called to active military duty.
- “Number of On-time Graduates” is the number of students who completed the program within 100% of the published program length within the reporting calendar year.
- “On-time Completion Rate” is the number of on-time graduates divided by the number of students available for graduation.
- “150% Graduates” is the number of students who completed the program within 150% of the program length (includes on-time graduates).
- “150% Completion Rate” is the number of students who completed the program in the reported calendar year within 150% of the published program length, including on-time graduates, divided by the number of students available for graduation.
- “Graduates Available for Employment” means the number of graduates minus the number of graduates unavailable for employment.
- “Graduates Unavailable for Employment” means the graduate who, after graduation, dies, become incarcerated, are called to active military duty, are international students that leave the United States or do not have a visa allowing employment in the United States, or are continuing their education in an accredited or bureau-approved postsecondary institution.
- “Graduates employed in the Field” means a graduate who beginning within six months after a student completes the applicable educational program are gainfully employed, whose employment has been reported, and for whom the institution has documented verification of employment. For occupations for which the state requires passing an examination, the six months period begins after the announcement of the examination results for the first examination available after a student completes an applicable educational program.
- “Placement Rate Employed in the Field” is calculated by dividing the number of graduates gainfully employed in the field by the number of graduates available for employment.
- “Number of Graduates Taking Exam” is the number of graduates who took the first available exam in the reported calendar year.
- “First Available Exam Date” is the date for the first available exam after a student completed a program.
- “Passage Rate” is calculated by dividing the number of graduates who passed the exam by the number of graduates who took the reported licensing exam.
- “Number Who Passed First Available Exam” is the number of graduates who took and passed the first available licensing exam after completing the program.
- “Salary” is as reported by graduate or graduate’s employer.
- “No Salary Information Reported” is the number of graduates for whom, after making reasonable attempts, the school was not able to obtain salary information.

**REDONDO BEACH BEAUTY COLLEGE**

**23800 Hawthorne Blvd # 200**

**Torrance, CA 90505**

**Phone: (310) 370-7464 Fax: (310) 370-8227**

[www.rbbeautycollege.com](http://www.rbbeautycollege.com)



**STUDENT'S RIGHT TO CANCEL**

**The student has the right to cancel** the enrollment agreement and obtain a full refund of charges paid, less a reasonable deposit or registration fee not to exceed one hundred fifty dollars (\$150), if notice of cancellation is made through attendance at the first class session (**first day of class to “first class day”, or the seven days after enrollment was signed**), whichever is later.

To obtain a refund, the student must provide a written notice to:

**Redondo Beach Beauty College**

**23800 Hawthorne Blvd # 200**

**Torrance, CA 90505**

**Phone (310)370-7464**

**Fax (310)370-8227**

**Email: [rbbeautycollege@yahoo.com](mailto:rbbeautycollege@yahoo.com)**

If the institution gave the student any equipment, the student shall return the equipment within 30 days following the date of the Notice of Cancellation. If the student fails to return the equipment within this 30 day-period, the institution may retain that portion of the consideration paid by the student equal to the documented cost to the institution of the equipment and shall refund the portion of the consideration exceeding the documented cost to the institution of the equipment within 10 days after the period within which the student is required to return the equipment. The student may retain the equipment without further obligation to pay for it.

**Student's Initials: \_\_\_\_\_ Date: \_\_\_\_\_**

**Initial only after you have had sufficient time to read and understand the information.**

**REDONDO BEACH BEAUTY COLLEGE**  
 23800 Hawthorne Blvd # 200  
 Torrance, CA 90505  
 Phone: (310) 370-7464 Fax: (310) 370-8227  
[www.rbbeautycollege.com](http://www.rbbeautycollege.com)



**SCHOOL PERFORMANCE FACT SHEET**  
**Calendar Years 2019 & 2020**

**PROGRAM NAME: ESTHETICIAN                      PROGRAM LENGTH: 600 hours 15-30 Weeks**

**On-Time Completion Rates: (Graduation Rates)**  
 Includes data for the two calendar years prior to reporting

Calendar Year	Number of Students Who Began Program	Students Available for Graduation	Number of on-time Graduates	On-time Completion Rate
**2019	23	23	20	87%
**2020	8	8	8	100%

Student's Initials: \_\_\_\_\_ Date: \_\_\_\_\_  
 Initial only after you have had sufficient time to read and understand the information.

**150% TABLE OPTIONAL (Program less than one year)**

**Students Completing After Published Program Length - 150% completion Rate (101-150%)**

Calendar Year	Number of Students Who Began Program	Students Available for Graduation	150% Graduates	150% Completion Rate
**2019	23	23	0	0%
**2020	8	8	0	0%

\*\* Included if the program is more than one year in length.

Student's Initials: \_\_\_\_\_ Date: \_\_\_\_\_  
 Initial only after you have had sufficient time to read and understand the information.

**REDONDO BEACH BEAUTY COLLEGE**  
 23800 Hawthorne Blvd # 200  
 Torrance, CA 90505  
 Phone: (310) 370-7464 Fax: (310) 370-8227  
[www.rbbeautycollege.com](http://www.rbbeautycollege.com)



**Job Placement Rates (includes data for the two calendar years prior to reporting)**

Calendar Year	Number of Student Who Began Program	Number of Graduate	Graduates Available for Employment	Graduates Employed in the Field	Placement Rate Employed in the Field
**2019	23	20	20	12	60%
**2020	8	8	8	5	62.50%

You may obtain from the institution a list of the employment positions determined to be in the field for which a student received education and training. **Student can obtain this information from Director of Admissions by requesting the information in writing.**

**Gainful Employment Categories (includes data for the two calendar years prior to reporting)**

**Part Time vs. Full Time Employment**

Calendar Year	“Part-Time” Graduates Employed in the field 20 to 29 hours per week	“Full-Time” Graduates Employed in at least 30 hours per week	Total Graduates Employed in the Field
**2019	8	4	12
**2020	4	1	5

**Student's Initials:** \_\_\_\_\_ **Date:** \_\_\_\_\_

**Initial only after you have had sufficient time to read and understand the information.**

**REDONDO BEACH BEAUTY COLLEGE**

23800 Hawthorne Blvd # 200

Torrance, CA 90505

Phone: (310) 370-7464 Fax: (310) 370-8227

[www.rbbeautycollege.com](http://www.rbbeautycollege.com)



**Single Position vs. Concurrent Aggregated Positions**

Calendar Year	Graduates Employed in the field in the single position	Graduates Employed in the field in concurrent aggregated positions	Total Graduates Employed in the Field
**2019	6	0	12
**2020	4	0	5

**Self-Employed/Freelance Positions**

Calendar Year	Graduates Employed who are self-employed or working freelance	Total Graduates Employed in the Field
**2019	6	12
**2020	1	5

**Institutional Employment**

Calendar Year	Graduates Employed in the field who are employed by the institution, an employer owned by the institution, or an employer who shares ownership with the institution	Total Graduates Employed in the Field
**2019	0	12
**2020	0	5

**Student's Initials:** \_\_\_\_\_ **Date:** \_\_\_\_\_

**Initial only after you have had sufficient time to read and understand the information.**

**IF the majority of graduates from this program obtain jobs in self-employment or freelance work add:**

This program may result in freelance or self-employment.

- the work available to graduates of this program is usually for freelance or self-employment.
- This type of work may not be consistent.
- The period of employment can range from one day to weeks to several months.
- Hours worked in a day or week may be more or less than the traditional 8 hour work day or 40 hour work week.
- You can expect to spend unpaid time expanding your networks, advertising, promoting your services, or honing your skills.
- Once graduates begin to work freelance or are self-employed, they will be asked to provide documentation that they are employed as such so that they may be counted as placed for our job placement records.
- Students initialing this disclosure understand that either a majority or all of this school's graduates are employed in this manner and understand what comprises this work style.

**Student's Initials:** \_\_\_\_\_ **Date:** \_\_\_\_\_

**Only initial after you have had sufficient time to read and understand the information**

**REDONDO BEACH BEAUTY COLLEGE**

23800 Hawthorne Blvd # 200

Torrance, CA 90505

Phone: (310) 370-7464 Fax: (310) 370-8227

[www.rbbeautycollege.com](http://www.rbbeautycollege.com)



**License Examination Passage Rates (includes data for the two calendar years prior to reporting)**

Calendar Year	Number of Graduates in Calendar Year	Number of Graduates Taking Exam	Number Who Passed First Available Exam	Number Who Failed First Available Exam	Passage Rate
**2019	20	19	17	2	89%
**2020	8	2	1	1	50%

Licensure examination passage data is not available from the state agency administering the examination. We are unable to collect data from graduates.

Student's Initials: \_\_\_\_\_ Date: \_\_\_\_\_

Initial only after you have had sufficient time to read and understand the information.

**Salary and Wage Information(includes data for the two calendar years prior to reporting)**

**Annual Salary and Wages Reported for Graduates Employed in the Field**

Calendar Year	Graduates Available for Employment	Graduates Employed in Field	\$10,000-\$15,000	\$15,001-\$20,000	\$20,001-\$30,000	\$30,001-\$35,001	No Salary Information Reported
**2019	20	12	4	0	0	0	0
**2020	8	5	0	4	1	0	0

A list of sources used to substantiate salary disclosures is available from the school. **Student can obtain this information from Director of Admissions by requesting the information in writing.**

Student's Initials: \_\_\_\_\_ Date: \_\_\_\_\_

Initial only after you have had sufficient time to read and understand the information.

**Cost of Educational Program**

Total charges for the program for students completing on-time **in 2019: \$6,500.00** Additional charges may be incurred if the program is not completed on-time.

Total charges for the program for students completing on-time **in 2020: \$6,500.00** Additional charges may be incurred if the program is not completed on-time.

Student's Initials: \_\_\_\_\_ Date: \_\_\_\_\_

Initial only after you have had sufficient time to read and understand the information.



**REDONDO BEACH BEAUTY COLLEGE**  
**23800 Hawthorne Blvd # 200**  
**Torrance, CA 90505**  
**Phone: (310) 370-7464 Fax: (310) 370-8227**  
[www.rbbeautycollege.com](http://www.rbbeautycollege.com)



**Federal Student Loan Debt**

Calendar Year	Most recent three-year cohort default rate, as reported by the United State Department of Education. 1	The percentage of enrolled students in 2019 and 2020 receiving federal student loans to pay for this program.	The percentage of graduates in 2019 and 2020 who took out federal student loans to pay for this program	The average amount of federal student loan debt of 2019 and 2020 graduates who took out federal student loans at this institution.
2019	0%	0%	100%	\$7,750
2020	0%	12.5%	100%	\$3,958.00

The percentage of students who defaulted on their federal student loans is called the Cohort Default Rate (CDR). It shows the percentage of this school’s students who were more than 270 days (9 months) behind on their federal student loans within three years of when the first payment was due. This is the most recent CDR reported by the U.S. Department of Education.

**Student’s Initials: \_\_\_\_\_ Date: \_\_\_\_\_**

**Initial only after you have had sufficient time to read and understand the information.**

This fact sheet is filed with the Bureau for Private Postsecondary Education. Regardless of any information you may have relating to completion rates, placement rates, starting salaries, or license exam passage rates, this fact sheet contains the information as calculated pursuant to state law.

Any questions a student may have regarding this fact sheet that have not been satisfactorily answered by the institution may be directed to the Bureau for Private Postsecondary Education at 2535 Capitol Oaks Drive, Suite 400, Sacramento, CA 95833, [www.bppe.ca.gov](http://www.bppe.ca.gov), toll-free telephone number (888) 370-7589 or by fax (916) 263-1897.

\_\_\_\_\_  
 Student Name-Print

\_\_\_\_\_  
 Student Signature

\_\_\_\_\_  
 Date

\_\_\_\_\_  
 School Official

\_\_\_\_\_  
 Date

## **REDONDO BEACH BEAUTY COLLEGE**

**23800 Hawthorne Blvd # 200**

**Torrance, CA 90505**

**Phone: (310) 370-7464 Fax: (310) 370-8227**

[www.rbbeautycollege.com](http://www.rbbeautycollege.com)



### **Definitions**

- “Number of Students Who Began the Program” means the number of students who began a program who were scheduled to complete the program within 100% of the published program length within the reporting calendar year and excludes all students who cancelled during the cancellation period.
- “Students Available for Graduation” is the number of students who began the program minus the number of students who have died, been incarcerated, or been called to active military duty.
- “Number of On-time Graduates” is the number of students who completed the program within 100% of the published program length within the reporting calendar year.
- “On-time Completion Rate” is the number of on-time graduates divided by the number of students available for graduation.
- “150% Graduates” is the number of students who completed the program within 150% of the program length (includes on-time graduates).
- “150% Completion Rate” is the number of students who completed the program in the reported calendar year within 150% of the published program length, including on-time graduates, divided by the number of students available for graduation.
- “Graduates Available for Employment” means the number of graduates minus the number of graduates unavailable for employment.
- “Graduates Unavailable for Employment” means the graduate who, after graduation, dies, become incarcerated, are called to active military duty, are international students that leave the United States or do not have a visa allowing employment in the United States, or are continuing their education in an accredited or bureau-approved postsecondary institution.
- “Graduates employed in the Field” means a graduate who beginning within six months after a student completes the applicable educational program are gainfully employed, whose employment has been reported, and for whom the institution has documented verification of employment. For occupations for which the state requires passing an examination, the six months period begins after the announcement of the examination results for the first examination available after a student completes an applicable educational program.
- “Placement Rate Employed in the Field” is calculated by dividing the number of graduates gainfully employed in the field by the number of graduates available for employment.
- “Number of Graduates Taking Exam” is the number of graduates who took the first available exam in the reported calendar year.
- “First Available Exam Date” is the date for the first available exam after a student completed a program.
- “Passage Rate” is calculated by dividing the number of graduates who passed the exam by the number of graduates who took the reported licensing exam.
- “Number Who Passed First Available Exam” is the number of graduates who took and passed the first available licensing exam after completing the program.
- “Salary” is as reported by graduate or graduate’s employer.
- “No Salary Information Reported” is the number of graduates for whom, after making reasonable attempts, the school was not able to obtain salary information.

**REDONDO BEACH BEAUTY COLLEGE**

**23800 Hawthorne Blvd # 200**

**Torrance, CA 90505**

**Phone: (310) 370-7464 Fax: (310) 370-8227**

[www.rbbeautycollege.com](http://www.rbbeautycollege.com)



**STUDENT'S RIGHT TO CANCEL**

**The student has the right to cancel** the enrollment agreement and obtain a full refund of charges paid, less a reasonable deposit or registration fee not to exceed one hundred fifty dollars (\$150), if notice of cancellation is made through attendance at the first class session (**first day of class to “first class day”, or the seven days after enrollment was signed**), whichever is later.

To obtain a refund, the student must provide a written notice to:

**Redondo Beach Beauty College,**

**23800 Hawthorne Blvd # 200**

**Torrance, CA 90505**

**Phone (310)370-7464**

**Fax (310)370-8227**

**Email: [rbbeautycollege@yahoo.com](mailto:rbbeautycollege@yahoo.com)**

If the institution gave the student any equipment, the student shall return the equipment within 30 days following the date of the Notice of Cancellation. If the student fails to return the equipment within this 30 day-period, the institution may retain that portion of the consideration paid by the student equal to the documented cost to the institution of the equipment and shall refund the portion of the consideration exceeding the documented cost to the institution of the equipment within 10 days after the period within which the student is required to return the equipment. The student may retain the equipment without further obligation to pay for it.

**Student's Initials: \_\_\_\_\_ Date: \_\_\_\_\_**

**Initial only after you have had sufficient time to read and understand the information.**

**REDONDO BEACH BEAUTY COLLEGE**

23800 Hawthorne Blvd # 200

Torrance, CA 90505

Phone: (310) 370-7464 Fax: (310) 370-8227

[www.rbbeautycollege.com](http://www.rbbeautycollege.com)



**SCHOOL PERFORMANCE FACT SHEET**

**Calendar Years 2019 & 2020**

**PROGRAM NAME: TEACHER TRAINING    PROGRAM LENGTH:    600 hours 15-30 Weeks**

**On-Time Completion Rates: (Graduation Rates)**

Includes data for the two calendar years prior to reporting

Calendar Year	Number of Students Who Began Program	Students Available for Graduation	Number of on-time Graduates	On-time Completion Rate
**2019	0	0	0	0
**2020	0	0	0	0

Student's Initials: \_\_\_\_\_ Date: \_\_\_\_\_

Initial only after you have had sufficient time to read and understand the information.

**150% TABLE OPTIONAL (Program less than one year)**

**Students Completing After within 150% of Published Program Length**

Calendar Year	Number of Students Who Began Program	Students Available for Graduation	150% Graduates	150% Completion Rate
**2019	0	0	0	0
**2020	0	0	0	0

\*\* Included if the program is more than one year in length.

Student's Initials: \_\_\_\_\_ Date: \_\_\_\_\_

Initial only after you have had sufficient time to read and understand the information.

**REDONDO BEACH BEAUTY COLLEGE**

23800 Hawthorne Blvd # 200

Torrance, CA 90505

Phone: (310) 370-7464 Fax: (310) 370-8227

[www.rbbeautycollege.com](http://www.rbbeautycollege.com)



**Job Placement Rates (includes data for the two calendar years prior to reporting)**

Calendar Year	Number of Student Who Began Program	Number of Graduate	Graduates Available for Employment	Graduates Employed in the Field	Placement Rate Employed in the Field
**2019	0	0	0	0	0
**2020	0	0	0	0	0

You may obtain from the institution a list of the employment positions determined to be in the field for which a student received education and training. **Student can obtain this information from Director of Admissions by requesting the information in writing.**

**Gainful Employment Categories (includes data for the two calendar years prior to reporting)**

**Part Time vs. Full Time Employment**

Calendar Year	"Part-Time" Graduates Employed in the field 20 to 29 hours per week	"Full-Time" Graduates Employed in at least 30 hours per week	Total Graduates Employed in the Field
**2019	0	0	0
**2020	0	0	0

**Student's Initials:** \_\_\_\_\_ **Date:** \_\_\_\_\_

**Initial only after you have had sufficient time to read and understand the information.**

**REDONDO BEACH BEAUTY COLLEGE**

23800 Hawthorne Blvd # 200

Torrance, CA 90505

Phone: (310) 370-7464 Fax: (310) 370-8227

[www.rbbeautycollege.com](http://www.rbbeautycollege.com)



**Single Position vs. Concurrent Aggregated Positions**

Calendar Year	Graduates Employed in the field in the single position	Graduates Employed in the field in concurrent aggregated positions	Total Graduates Employed in the Field
**2019	0	0	0
**2020	0	0	0

**Self-Employed/Freelance Positions**

Calendar Year	Graduates Employed who are self-employed or working freelance	Total Graduates Employed in the Field
**2019	0	0
**2020	0	0

**Institutional Employment**

Calendar Year	Graduates Employed in the field who are employed by the institution, an employer owned by the institution, or an employer who shares ownership with the institution	Total Graduates Employed in the Field
**2019	0	0
**2020	0	0

**Student's Initials: \_\_\_\_\_ Date: \_\_\_\_\_**

**Initial only after you have had sufficient time to read and understand the information.**

**IF the majority of graduates from this program obtain jobs in self-employment or freelance work add:**

This program may result in freelance or self-employment.

- the work available to graduates of this program is usually for freelance or self-employment.
- This type of work may not be consistent.
- The period of employment can range from one day to weeks to several months.
- Hours worked in a day or week may be more or less than the traditional 8 hour work day or 40 hour work week.
- You can expect to spend unpaid time expanding your networks, advertising, promoting your services, or honing your skills.
- Once graduates begin to work freelance or are self-employed, they will be asked to provide documentation that they are employed as such so that they may be counted as placed for our job placement records.
- Students initialing this disclosure understand that either a majority or all of this school's graduates are employed in this manner and understand what comprises this work style.

**Student's Initials: \_\_\_\_\_ Date: \_\_\_\_\_**

**Only initial after you have had sufficient time to read and understand the information.**

**REDONDO BEACH BEAUTY COLLEGE**

23800 Hawthorne Blvd # 200

Torrance, CA 90505

Phone: (310) 370-7464 Fax: (310) 370-8227

[www.rbbeautycollege.com](http://www.rbbeautycollege.com)



**License Examination Passage Rates (includes data for the two calendar years prior to reporting)**

Calendar Year	Number of Graduates in Calendar Year	Number of Graduates Taking Exam	Number Who Passed First Available Exam	Number Who Failed First Available Exam	Passage Rate
**2019	0	0	0	0	0
**2020	0	0	0	0	0

Licensure examination passage data is not available from the state agency administering the examination. We are unable to collect data from graduates for this program

Student's Initials: \_\_\_\_\_ Date: \_\_\_\_\_

Initial only after you have had sufficient time to read and understand the information.

**Salary and Wage Information (includes data for the two calendar years prior to reporting)**

**Annual Salary and Wages Reported for Graduates Employed in the Field**

Calendar Year	Graduates Available for Employment	Graduates Employed in Field	\$10,000-\$15,000	\$15,001-\$20,000	\$20,001-\$25,000	\$25,001-\$30,000	No Salary Information Reported
**2019	0	0	0	0	0	0	0
**2020	0	0	0	0	0	0	0

A list of sources used to substantiate salary disclosures is available from the school. **Student can obtain this information from Director of Admissions by requesting the information in writing.**

Student's Initials: \_\_\_\_\_ Date: \_\_\_\_\_

Initial only after you have had sufficient time to read and understand the information.

**Cost of Educational Program**

Total charges for the program for students completing on-time **in 2019: \$5,450.00** Additional charges may be incurred if the program is not completed on-time.

Total charges for the program for students completing on-time **in 2020: \$5,450.00** Additional charges may be incurred if the program is not completed on-time.

Student's Initials: \_\_\_\_\_ Date: \_\_\_\_\_

Initial only after you have had sufficient time to read and understand the information.

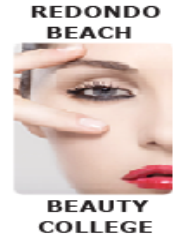
**REDONDO BEACH BEAUTY COLLEGE**

23800 Hawthorne Blvd # 200

Torrance, CA 90505

Phone: (310) 370-7464 Fax: (310) 370-8227

[www.rbbeautycollege.com](http://www.rbbeautycollege.com)



**Federal Student Loan Debt**

Calendar Year	Most recent three-year cohort default rate, as reported by the United State Department of Education. 1	The percentage of enrolled students in 2018 and 2019 receiving federal student loans to pay for this program.	The percentage of graduates in 2018 and 2019 who took out federal student loans to pay for this program	The average amount of federal student loan debt of 2018 and 2019 graduates who took out federal student loans at this institution.
2019	0	0	0	0
2020	0	0	0	0

The percentage of students who defaulted on their federal student loans is called the Cohort Default Rate (CDR). It shows the percentage of this school’s students who were more than 270 days (9 months) behind on their federal student loans within three years of when the first payment was due. This is the most recent CDR reported by the U.S. Department of Education.

**Student’s Initials: \_\_\_\_\_ Date: \_\_\_\_\_**

**Initial only after you have had sufficient time to read and understand the information.**

This fact sheet is filed with the Bureau for Private Postsecondary Education. Regardless of any information you may have relating to completion rates, placement rates, starting salaries, or license exam passage rates, this fact sheet contains the information as calculated pursuant to state law.

Any questions a student may have regarding this fact sheet that have not been satisfactorily answered by the institution may be directed to the Bureau for Private Postsecondary Education at 2535 Capitol Oaks Drive, Suite 400, Sacramento, CA 95833, [www.bppe.ca.gov](http://www.bppe.ca.gov), toll-free telephone number (888) 370-7589 or by fax (916) 263-1897.

\_\_\_\_\_  
Student Name-Print

\_\_\_\_\_  
Student Signature

\_\_\_\_\_  
Date

\_\_\_\_\_  
School Official

\_\_\_\_\_  
Date





**REDONDO BEACH BEAUTY COLLEGE**

**23800 Hawthorne Blvd # 200**

**Torrance, CA 90505**

**Phone: (310) 370-7464 Fax: (310) 370-8227**

[www.rbbeautycollege.com](http://www.rbbeautycollege.com)

**Definitions**

- “Number of Students Who Began the Program” means the number of students who began a program who were scheduled to complete the program within 100% of the published program length within the reporting calendar year and excludes all students who cancelled during the cancellation period.
- “Students Available for Graduation” is the number of students who began the program minus the number of students who have died, been incarcerated, or been called to active military duty.
- “Number of On-time Graduates” is the number of students who completed the program within 100% of the published program length within the reporting calendar year.
- “On-time Completion Rate” is the number of on-time graduates divided by the number of students available for graduation.
- “150% Graduates” is the number of students who completed the program within 150% of the program length (includes on-time graduates).
- “150% Completion Rate” is the number of students who completed the program in the reported calendar year within 150% of the published program length, including on-time graduates, divided by the number of students available for graduation.
- “Graduates Available for Employment” means the number of graduates minus the number of graduates unavailable for employment.
- “Graduates Unavailable for Employment” means the graduate who, after graduation, dies, become incarcerated, are called to active military duty, are international students that leave the United States or do not have a visa allowing employment in the United States, or are continuing their education in an accredited or bureau-approved postsecondary institution.
- “Graduates employed in the Field” means a graduate who beginning within six months after a student completes the applicable educational program are gainfully employed, whose employment has been reported, and for whom the institution has documented verification of employment. For occupations for which the state requires passing an examination, the six months period begins after the announcement of the examination results for the first examination available after a student completes an applicable educational program.
- “Placement Rate Employed in the Field” is calculated by dividing the number of graduates gainfully employed in the field by the number of graduates available for employment.
- “Number of Graduates Taking Exam” is the number of graduates who took the first available exam in the reported calendar year.
- “First Available Exam Date” is the date for the first available exam after a student completed a program.
- “Passage Rate” is calculated by dividing the number of graduates who passed the exam by the number of graduates who took the reported licensing exam.
- “Number Who Passed First Available Exam” is the number of graduates who took and passed the first available licensing exam after completing the program.
- “Salary” is as reported by graduate or graduate’s employer.
- “No Salary Information Reported” is the number of graduates for whom, after making reasonable attempts, the school was not able to obtain salary information.

**REDONDO BEACH BEAUTY COLLEGE**

**23800 Hawthorne Blvd # 200**

**Torrance, CA 90505**

**Phone: (310) 370-7464 Fax: (310) 370-8227**

[www.rbbeautycollege.com](http://www.rbbeautycollege.com)



**STUDENT'S RIGHT TO CANCEL**

**The student has the right to cancel** the enrollment agreement and obtain a full refund of charges paid, less a reasonable deposit or registration fee not to exceed one hundred fifty dollars (\$150), if notice of cancellation is made through attendance at the first class session (**first day of class to “first class day”, or the seven days after enrollment was signed**), whichever is later.

To obtain a refund, the student must provide a written notice to:

**Redondo Beach Beauty College**

**23800 Hawthorne Blvd # 200**

**Torrance, CA 90505**

**Phone (310)370-7464**

**Fax (310)370-8227**

**Email: [rbbeautycollege@yahoo.com](mailto:rbbeautycollege@yahoo.com)**

If the institution gave the student any equipment, the student shall return the equipment within 30 days following the date of the Notice of Cancellation. If the student fails to return the equipment within this 30 day-period, the institution may retain that portion of the consideration paid by the student equal to the documented cost to the institution of the equipment and shall refund the portion of the consideration exceeding the documented cost to the institution of the equipment within 10 days after the period within which the student is required to return the equipment. The student may retain the equipment without further obligation to pay for it.

**Student's Initials: \_\_\_\_\_ Date: \_\_\_\_\_**

**Initial only after you have had sufficient time to read and understand the information.**

